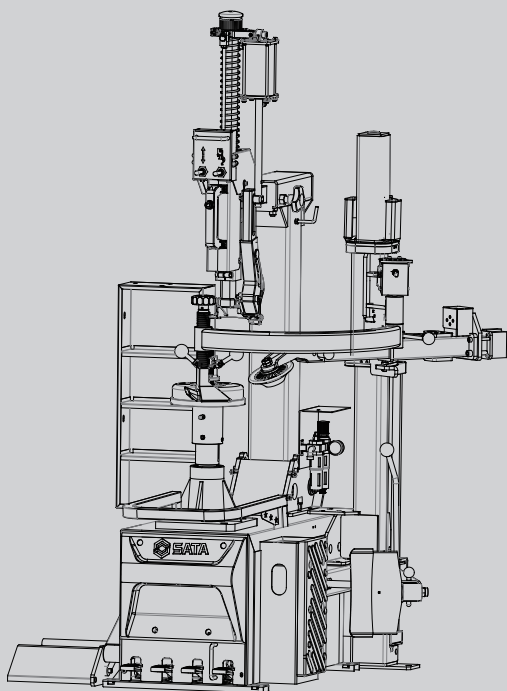




无大盘后倾式免撬棍轮胎拆装机
No Turntable Leverless Tilt-Tower Tire Changer With Helper

AE1027H/AE1027H-3



使用说明书 \ User's Manual



目 录

第一章 安全注意事项	5
第二章 安装说明	8
第三章 操作指南	13
第四章 维修与保养	17
第五章 报废	19
第六章 电路和气路图	19
第七章 产品爆炸图	22
Chapter I Safety precautions	47
Chapter II Installation instructions	50
Chapter III Operation Instruction	55
Chapter IV Repair and maintenance	60
Chapter V Scrapping	62
Chapter VI Electric circuit and air circuit diagram	62
Chapter VII Product explosive view	64

技术参数	外夹轮辋直径	内撑轮辋直径	适用最大轮辋宽度	适用最大轮胎直径	气缸最大推拉力
AE1027H	13-28"		350mm	1100mm	2500 kgf
AE1027H-3					
技术参数	大盘转速	工作气压	工作噪音	外箱尺寸	毛净重
AE1027H	6 -12 rpm	8-10 bar	≤ 70 db	1380*1130*1840mm	432Kg/380 Kg
AE1027H-3					

开箱后即请检查产品，确保产品完好无损。如果发现有任何部件缺失或损坏；
 请电话联系世达汽车科技（上海）有限公司客户服务部：400-820-3885、800-820-3885。
 请记录产品序列号：_____

注：如果产品没有序列号，请记录购买日期。

请妥善保管本使用说明书：

- 1) 本使用说明书涉及产品的安全警告、安装操作、维护保养、常见故障处理等内容，请妥善保管。
- 2) 请记录本产品的序列号（或购买日期）在使用说明书首页，并将说明书保存于干燥安全之处以备参阅。
- 3) 请在完全理解本说明书内容的基础上，正确使用产品。
- 4) 本产品已经投保产品责任险。

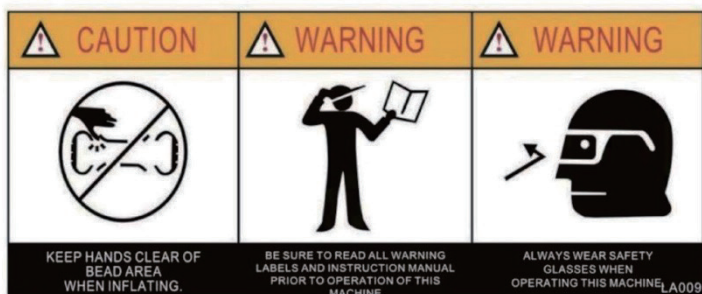
第一章 安全注意事项

- 不正确的操作可能导致人身伤害及设备损坏。
- 使用前请务必仔细阅读并理解说明书的全部内容。
- 请保证儿童与其他未经许可的人员远离工作区域。
- 确保设备连接到正确的电源和气源，并可靠接地。
- 请在平整、水平、干燥并能可靠承载的平面上使用本设备。
- 避免意外启动，在维修之前请确保设备已关闭，电气源断开。
- 将保护装置和安全装置保持在正确的位置，并保持正常工作。
- 保持工作区域清洁和良好的照明，混乱或黑暗区域会引发事故
- 严禁超载使用本产品，否则引起的事故责任不在保险范围之列。
- 请保持远离热源与火源，高温可能对本设备和密封元件造成损坏。
- 避免危险的环境，不要在潮湿的环境使用设备，或将其暴露在雨中。
- 严禁任何未经培训的人员使用本设备，且不得自行拆装或改装本设备。
- 确保车轮正确安装，按不同轮毂选择正确的方式将其锁紧固定在本设备上。
- 每次使用前都要仔细检查，如有漏油、零部件、附件松动或者损坏，都不能使用。
- 请让具有专业维修资质的专业人员合理维护设备，如需更换配件请使用原厂配件。
- 在操作时必须穿戴符合国家相关安全防护安全规定的安全鞋、防护眼镜和工作手套，推荐选用世达相关产品。
- 严禁在酒后、精神乏力、注意力不集中，受药物影响而困倦以及任何意识不清醒的情况下使用设备。

警告

本手册中所包含的注意、警告、指示等信息不能涵盖所有可能发生的情况。操作人员必须明白日常谨慎操作和具备专业知识是在操作本产品时不可或缺的因素。

1.1 警告标贴



操作中手要
远离轮胎

操作时须佩戴
好防护用品

使用前请仔细
阅读说明书



小心触电!



注意：压胎时请勿用手接触轮胎侧壁



切勿将身体任何部位探入拆装头下方



夹紧轮辋时，请注意手和其他部位勿进入卡爪与轮辋间



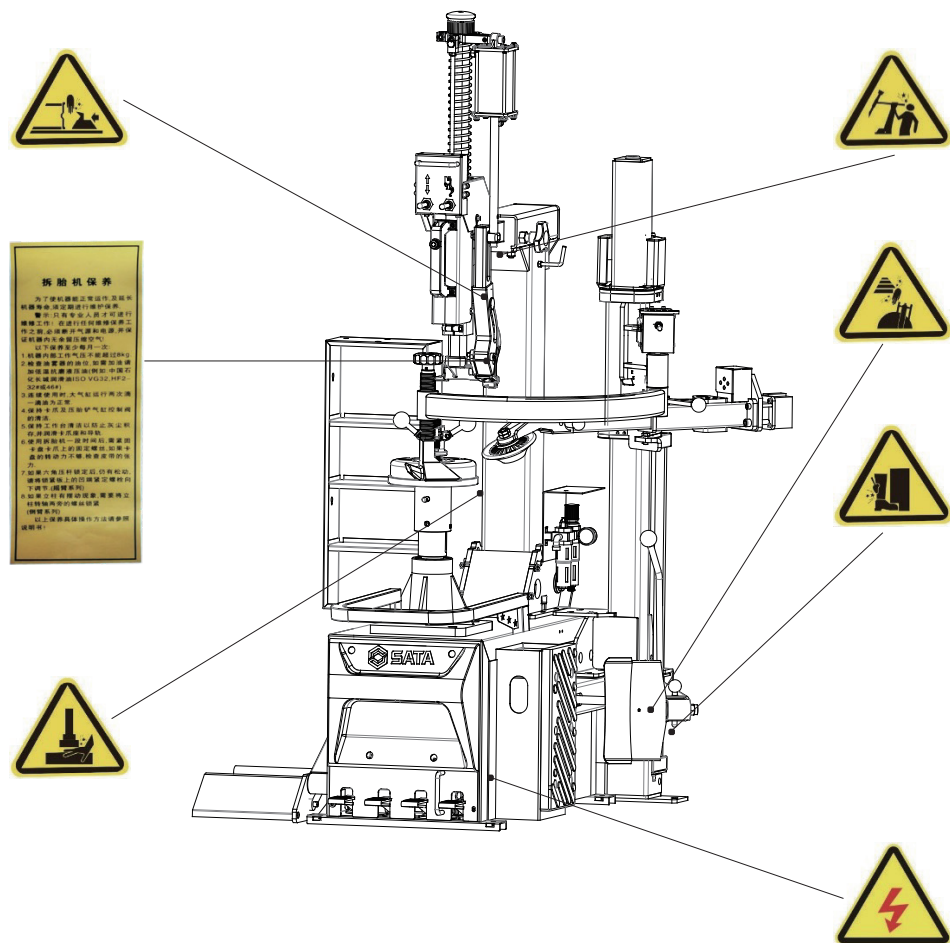
压胎时，请勿站立于铲刀和轮胎中间，以免受伤



小心立柱后仰伤人

1.2 安全标识位置示意图

- 注意保持安全标识的完整，模糊或丢失时，应立即更换新标识应使操作者清楚看见安全标识并须明确标识正确含义





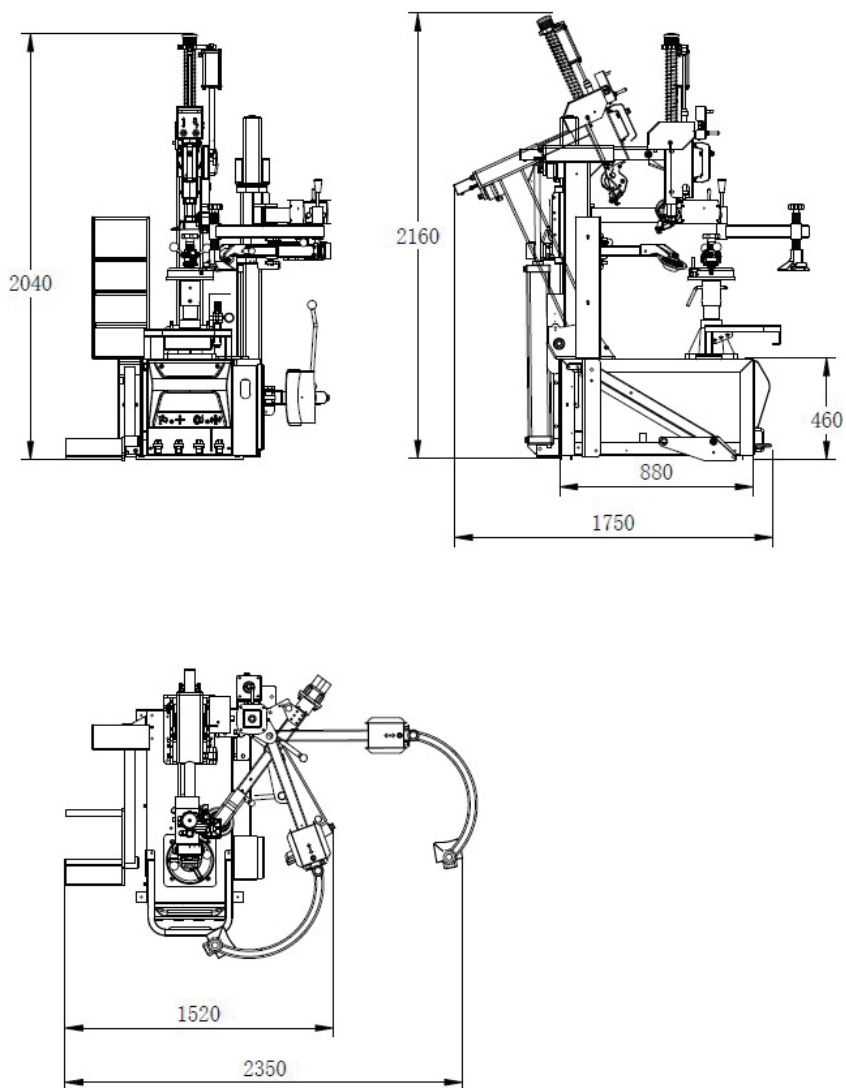
第二章 安装说明

拆胎机的安装必须由专业人员完成。安全和有效的使用取决于正确的安装。如果有问题请联系世达授权的经销商。

2.1 设备尺寸和使用空间

- 拆胎机必须放置在坚固的平面地板上，并使用螺栓固定。
- 安装拆胎机的位置，附近必须有电源和气源，一起连接。
- 适合放置拆胎机的位置，须在拆胎机周围留有足够的操作空间。
- 确保所选的位置上面和后面有足够的空间让辅助臂或倒臂正常工作
- 拆胎机右侧和正面至少留 500mm 的操作空间，以便拆装轮胎以及压胎工作。

AE1027H/AE1027H-3 尺寸图：

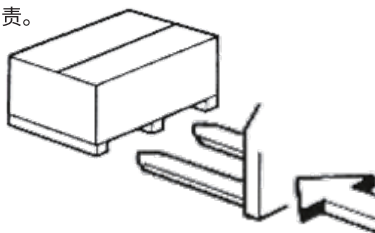


2.2 安全规则

- 本设备应由专业人员或经培训过的人员操作。
- 未经许可对设备（尤其是电气部分）进行动，本公司概不负责。
- 任何对电气部分的处理，只能由专业人员进行。

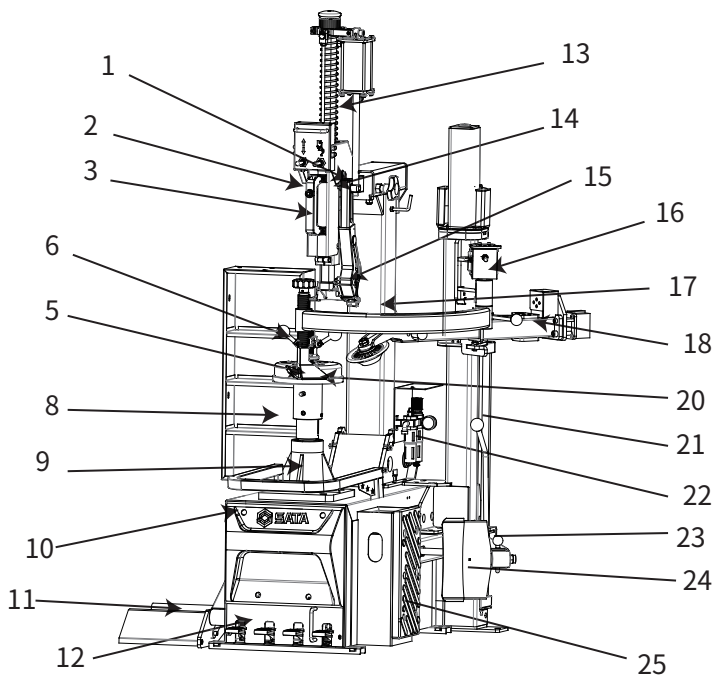
2.3 运输 / 拆箱

- 叉车搬运，搬动位置如右图所示。
- 拆去包装，检查设备是否受损。
- 将包装材料远离儿童放置，以免造成危险。



注意

设备表面都涂有一层特殊的防锈油，易沾上灰尘，必要时应尽量擦除。



1.横臂总成	6.快速锁紧螺母	11.升降机	16.	21.辅助臂气缸
2.拆抬头六方杆升降控制手柄	7.可升降中心操作盘	12.脚踏总成	17.可后仰立柱	22.气源3联件
3.双向锁紧控制手柄	8.工具柜	13.拆抬头六方杆	••	23.大气缸活塞杆长短调节套
4.轮胎充气枪	9.花键轴轴承座	14.拆抬头升降控制阀	19.辅助臂轮胎压辊	24.压胎铲
5.中心锁紧杆	10.箱体	15.可翻转拆抬头总成	20.辅助臂轮胎压块	25.压胎橡胶衬垫

2.6 电源连接

- 在安装连接之前检查电源系统是否与该机器铭牌上的技术参数相吻合，机器联接的电网必须带有保护装置，且有良好的外壳接地保护，并在主电源上安装漏电自动空气开关，漏电电源设定在 50mA/s 内。
- 检查电机旋转方向（此检查仅针对配备三相电机的机器）。踩下转盘正 / 反转控制踏板转盘应顺时针方向旋转，如转盘

逆时针旋转，则可在开关处任意调换两相电缆的接头，若没有按照上述说明而造成的任何损坏厂家概不负责。

- 注意：若机器没有电源插头，用户要自行安装一个与机器电压一致的电源插头。

2.7 气源连接

- 本机器要求空气压力为 7-10bar(100-140psi) 保证这一压力范围才能满足机器使用，若低于 7bar(100psi)，压胎铲的胎压力可能会对某种轮胎显得不够。新安装的压缩空气管路使用前要吹管，避免管内杂物损坏新机器。用户要定期给空气压缩机排水。将机器油雾器上的接头与空气压缩机系统相连接，连接后应注意观察油雾器上气压表的压力是否达到气压设定中所规定的要求，如没有达到要求请检查管路或空气压缩机是否有故障。

2.8 整机测试

- 按下双向锁紧控制手柄 (2) 横臂与纵向六方杆自动锁紧。
- 再按下双向锁紧控制手柄 (2) 横臂与纵向六方杆自动锁紧松开，自动上升 / 下降。
- 拆胎头翻转控制手柄 (14) 拨上控制手柄拆胎头翻转钩上，拨下控制手柄拆胎头翻转钩下。
- 拆胎头六方杆控制手柄 (3) 拨上控制手柄拆胎头六方杆上升，拨下控制手柄拆胎头六方杆下降。
- 踩下转盘旋转脚踏 (11) 转盘顺时针旋转，继续下踩快速旋转。上抬脚踏转盘逆时针旋转。
- 踩下轮胎举升机脚踏 (11) 可以控制举升机上升、下降和任意高度停住。
- 踩下立柱后仰脚踏 (11) 可以控制立柱后仰、前倾和任意角度停住，踩下压胎铲脚踏 (11) 压胎气缸开始运动。
- 辅助臂升降控制手柄 (18) 拨上控制手柄辅助臂上升，拨下控制手柄辅助臂下降。

第三章 操作指南

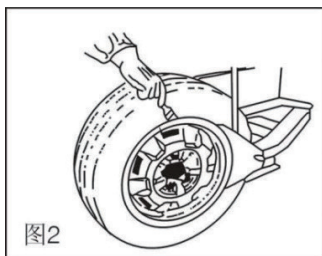
拆胎前准备：

- 将胎中的空气全部放净。
- 将轮胎外缘的平衡块卸下。
- 根据轮胎宽度调整可升降。
- 中心操作盘的高度。

(一般情况下操作盘调到最高处用于正装轮胎，只有拆装反装宽轮胎时才将操作盘降低到低处)

拆除轮胎请按如下步骤操作：

- 将轮胎置于压胎铲和压胎橡胶衬垫之间，使压胎铲置于轮缘和胶胎之间，然后踩压脚踏板，使轮胎与轮辋分离（图2）压胎时，请使用毛刷蘸取润滑膏或润滑油润滑胎缘。



- 用举升机将轮胎举升到操作台平面，将轮胎放平，并将操作盘上的摆动销对准轮胎的任意螺孔，用锥体、锁紧螺杆和快速螺母将轮胎在操作盘上锁紧。

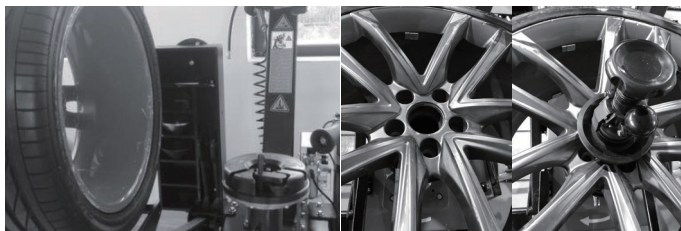


图3

放置拆装机头，如果轮胎较硬，胎缘贴在轮缘未脱离，拆胎头无法放置到拆装位置请按以下操作：

- 1 将压胎轮放置在轮辋附近（压胎轮距轮缘约 3-5mm 处），锁紧手柄。
- 2 操纵辅助臂升降开关，使压胎辊轮下移，将轮胎压下，踩下转盘开关，使胎缘与轮缘完全分离（胎缘压下在第二轮圈或在往下位置处），给拆胎头留有足够空间，放置拆胎头。



图 4



图 5

将拆装头置于工作位置，并用锁紧杆锁紧。为避免划伤轮缘，应保证拆装头保护塑料处平面与轮缘之间留有 2mm 间隙。〔图 4〕

注意：因轮辋长时间使用它的圆度和平行度很难保证，所以在拆装机头置于工作位置时，首先应找到轮辋轮辐的最高点和轮辋圆度最凸点。然后以此两点固定拆装机头的工作位置，以免在拆装轮时划伤轮辋。

- 操纵辅助臂升降开关，并将压胎辊放置距轮缘约 5mm 处，锁紧手柄，将轮胎压下约 100mm 处，拨下拆装头翻转开关，拆装头挂钩翻下如。〔图 5〕
- 拨动辅助臂升降开关，提升辅助压胎辊轮，辅助臂上升最高处。
- 移动辅助压胎臂，将辅助压胎块放置在拆装头对面 180 位置，拨下辅助压胎头升降开关，将轮胎压至下轮辋第二轮圈位置，以免鸟头钩向上翻转时拉伤轮胎。〔图 6〕



图 6



图 7

- 拨上拆装头翻转开关，使拆装头钩起轮胎。〔图 7〕
- 如胎缘粘贴与轮缘较近或未完全分离或轮胎较硬，拆装头挂钩无法将轮胎缘完全钩起，请按以下步骤操作：
 - 1 操纵压胎头升降开关，提升压胎头，并将压胎辅助臂移开。
 - 2 拨下拆装翻转控制开关，挂钩翻下，压胎头放置距轮缘 3mm，锁紧手柄。
 - 3 操纵辅助臂升降开关，使压胎轮压下轮胎，胎缘压置挂钩下外，拨上拆装翻转控制开关，将挂钩翻起，提升压胎头，并移开辅助压胎臂。
 - 4 操纵压胎轮往下压住轮胎，踩下转盘开关，使轮胎与轮辋脱离〔胎缘与轮缘完全分离在第二轮圈处或再往下位置即可，再重复上述钩胎步骤〔6、7、8、9〕直至将轮缘钩起。
- 用胎撬插在拆装头挂钩钩起的胎缘下面〔图 8〕，点踩转盘正 / 反转踏板，让转盘顺时针旋转，直到胎缘脱落为止〔图 9〕
- 9) 为了避免损坏内胎，如果有内胎在进行这步骤操作时，建议从轮胎气门右边 10cm 左右开始拆卸。如拆胎受阻，应立即停车，让转盘逆时针转动，消除障碍。



图 8



图 9

如有内胎，取出内胎再拆另一胎缘步骤：

- 分离内侧轮胎如果轮胎外侧已分离，内侧仍然与缸圈粘贴，请按以下步骤操作：

- 1 移动辅助压胎臂和辅助压胎辊轮（移动前，记好辊轮的刻度）；
- 2 按刻度将压胎辊轮在内侧轮胎与轮辋粘贴位置，锁紧辊轮六方杆手柄
- 3 操纵辅助臂升降开关，提升辊轮，使轮胎与轮辋分离（可在轮胎不同位置反复操作直至分离）（图 10）



图 10

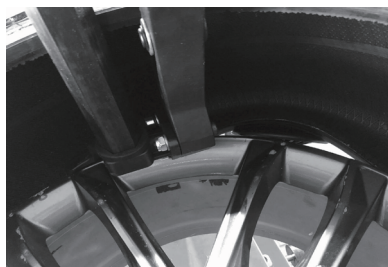


图 11

注意：提升辊轮注意辊轮不能放在轮辋底下，否则会损坏辊轮和轮胎。

- 拨下拆装头翻转开关，使拆装头的挂钩翻下，将辅助压胎轮拉置轮辋内侧 5mm 处，拨动辅助升降开关托起轮胎，胎缘置拆装头钩上处（图 10）。
- 拨上拆装头翻转开关，拆装机头挂钩将轮胎的胎缘钩起，然后再拨上辅助臂升降开关，辊轮上升至高出轮辋上缘 2cm（图 11），踩下电机转动脚踏、将轮胎与轮辋分离，然后将轮胎向立柱倾斜 45°（图 12），踩下立柱后仰脚踏，立柱后仰后取出轮胎（图 12）。



图 12



图 13

安装轮胎请按如下步骤操作：

在安装轮胎之前，检查轮胎和轮辋尺寸是否相同。

- 将轮辋在操作盘上锁定。
- 将胎缘置于拆装头尾部上方 (图 14)，同时使轮胎置于拆装头挂钩底部 (图 15) 并压胎肚。



图 14



图 15



图 16



图 17

- 用润滑膏或润滑油润滑轮缘 (图 16)，顺时针旋转转盘让胎缘落入轮辋槽内。如有内胎，将其套在轮辋上，重复以上步骤，再安装轮胎的上部。
- 安装轮胎的上部，胎缘置于拆装头尾部上方 (图 14)，同时使轮胎置于拆装头挂钩底部 (图 15)，辅助压胎轮端面移置距轮缘 5mm 处，锁紧手柄，拨下辅助臂升降开关，将辅助压胎轮往下至 1/2 轮辋平面处 (图 16)。
- 将压胎块放置在轮辋附近并离压胎轮左侧约 200mm 位置，拨动辅助升降开关，将轮胎压下置轮辋第二圈处 (图 17)
- 踩下转盘踏板，让转盘顺时针旋转，轮胎便能轻松装入轮辋中。如装胎受阻，应立即停车，让转盘逆时针转动，消除障碍，直至轮胎顺利的装入轮辋中。

注意：在转盘旋转过程中，轮胎安装运行到最后阶段可多次停顿后再启动，并且适当提升辅助手，以免拉伤轮胎。

充气

- 在轮胎充气的时候要极度的小心，严格的按照下面的说明执行，因为拆胎机的设计的制造对于突然的爆胎不予以周围的人保护
- 爆胎会导致操作者的严重的伤害或甚至导致死亡。仔细检查轮辋和轮胎的尺寸要相同。在充气之前要检查轮胎没有毛病或磨损。每次喷气之后都要检查压力。无论如何不要超出制造厂家建议的压力值使您的身体和手尽可能远离轮胎。
- 使用充气表进行轮胎的充气在标准的版本下，我们的拆胎机配有充气表。充气程序如下：

- 1) 将充气表和轮胎气阀相连接

- 2) 最后检查一下轮胎和轮辋的尺寸的配合
- 3) 检查胎口是否被充分润滑，如果有必要的话，进行更深一步的润滑
- 4) 充气，检查充气表的气压
- 5) 继续充气，边充气便检查气压

爆炸的危险!

- 轮胎充气的时候不要超过 3.5bar (51psi)；充气前轮胎从大盘上卸下，置于专用的保护笼中进行充气。千万不要超过制造厂家建议的充气压力，手和身体位于正在充气的轮胎的 后侧；仅由受过专门训练的授权的人员进行充气的操作，其他的人不得操作或呆在拆胎机的附近。
- 在此过程中，噪音能达到 85 分贝。建议使用噪音保护

第四章 维修与保养

清洗和日常维护工作须专业人士根据本厂以下指南操作：

- 在进行维护之前，要切断电源和气源。
- 检查油雾器油杯的油位，如需加油，先切断电源和气源，用手拧下油杯，可用 32# 液压油充至油杯 2/3 油量。



拔出盖子，旋转可调节压力，压力设定范围为 8-10Bar



压下盖子，锁定压力



定时检查汽水分离器水位高度，请勿超过分离器 50% 高度，必要时可转动锁紧钮，人工排水。



每天检查润滑油液位，必要时可打开油盖添加。注意，禁止使用长期暴露于空气中的润滑油。



每天检查润滑状况，确保踩压踏脚时润滑油滴入油雾器中。必要时可使用螺丝刀调整油雾器调节螺丝。



- 定期清理油杯及油水分离器内的凝结物。
- 定期清理操作盘、锁紧杆和快速螺母，并适量滴注润滑油。
- 定期的检查并拧紧所有连接部件的螺栓。
- 保持六方杆的干燥和干净（用柴油清洁），并适量滴注润滑油。
- 检查传动皮带的张力，当需要调整时适当调整调节螺杆，以达到张紧驱动皮带的作用。
- 保持机器及工作区的干净，以避免灰尘进入动件。
- 凡相对产生位移的结合面和相对摩擦的结合面，每周应使用锂基脂类的油品进行润滑。
- 定期清洁控制阀及快阀上的消音器以免影响气缸正常工作，清洁时要把消音器拧下水清洗或用压缩空气把脏物吹净。
- 在每次拆胎和上胎之后都应清洁操作盘和箱体上的杂物以免在使用过程中，由于杂物过多而导致操作盘的磨损。
- 如果六方杆不能锁紧可用扳手往下调节止动螺母或者调动卡板上的螺杆达到应用效果。

机器停用期间的维护和保养

- 若机器在长时间不使用的情况下，应当断掉电源与气源，并排空机器内部的残留气体，将机器表面擦净，除喷涂表面外，其余应涂油防锈，并将其罩好，避免潮气，灰尘。当机器重新投入使用时应按前述内容逐一检查所有功能是否正常。

移动机器

- 需用叉车移动轮胎拆装机。
- 切断电源和气源，松开固定底座的膨胀螺钉，将底座撬起，在底座下面插入叉车叉脚，将其安装在新位置上，平稳固定。

注意：轮胎拆装机的位置必须符合安全规范。

机器的报废

- 若决定机器不再使用，则应拆除电源和气源，并把机器拆卸分类，如金属、塑料、油类等，而后按当地法规进行处理。

故障 / 原因 / 排除

首先要检查电源和气源是否符合机器的使用条件！

转盘只单向转动

- 原因：转换开关损坏
- 解决：更换转换开关

转盘不转动

- 原因：皮带损坏、万能转向开头损坏、减速器损坏、机电电容或电机有问题。
- 解决：更换损坏的皮带或减速器或转向开关或电容或电机，并检查电源插头和插座是否松动。

操作盘不能正确锁住轮胎

- 原因：锁紧螺杆没有挂住销子，操作盘卡销没有插入轮毂螺孔或快速螺母划扣。
- 解决：按正确的锁紧程序操作，或更换快速螺母。

气动部件漏气

- 原因：密封圈破损或元件损坏
- 解决：找出相应密封圈或元件更换

保修说明

整机质保一年，保修服务只限于正常使用下有效。一切人为损坏（如：用户未依照说明书使用、自行装配非本公司提供的配件、因用户运输及其他意外造成设备损坏、非经本公司认可的改装、自然灾害造成的损坏，配件超过保修期需更新等），均不在免费保修范围之内，维修照常收费。

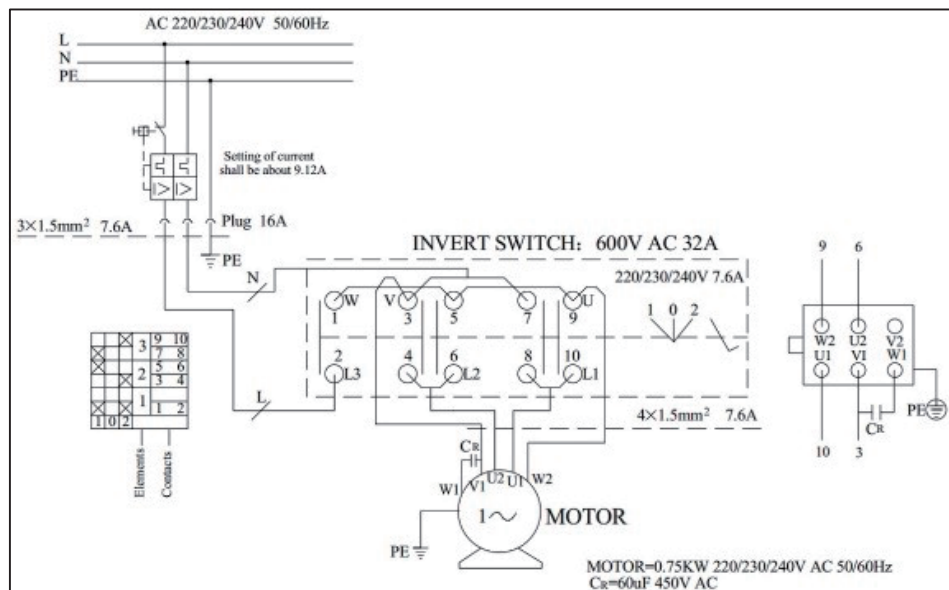
- 凡设备上涉及生产音和产品形象的铭牌，贴纸等不得撕毁，否则不予保修。售后服务热线电话：02160615662

- 世达汽车科技（上海）有限公司拥有此保修政策的最终解释权。

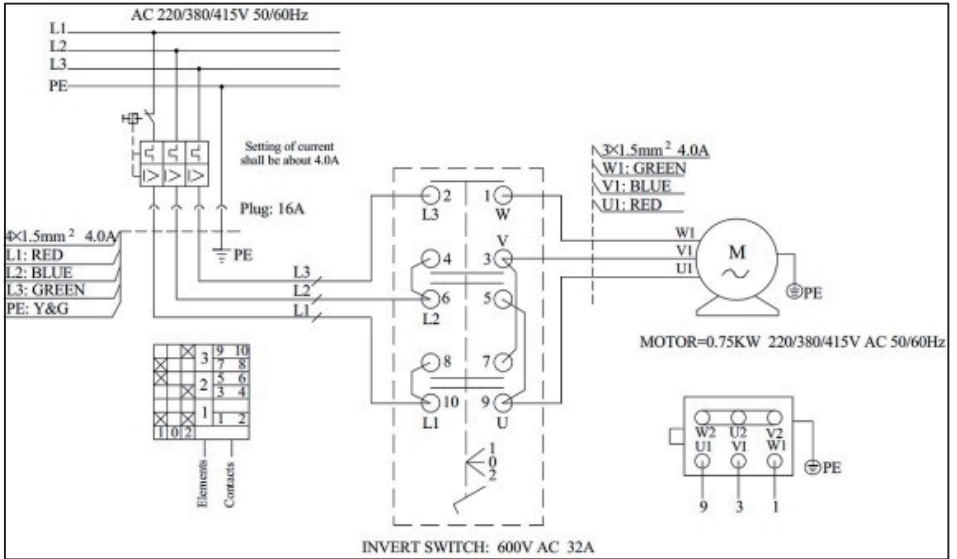
第五章 报废

当设备寿命已尽，不能再使用时，请按照当地有关法规妥善处理。

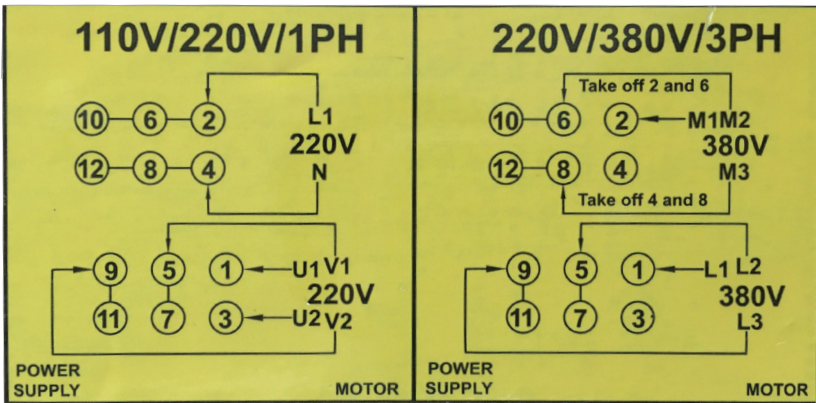
第九章 电路和气路图



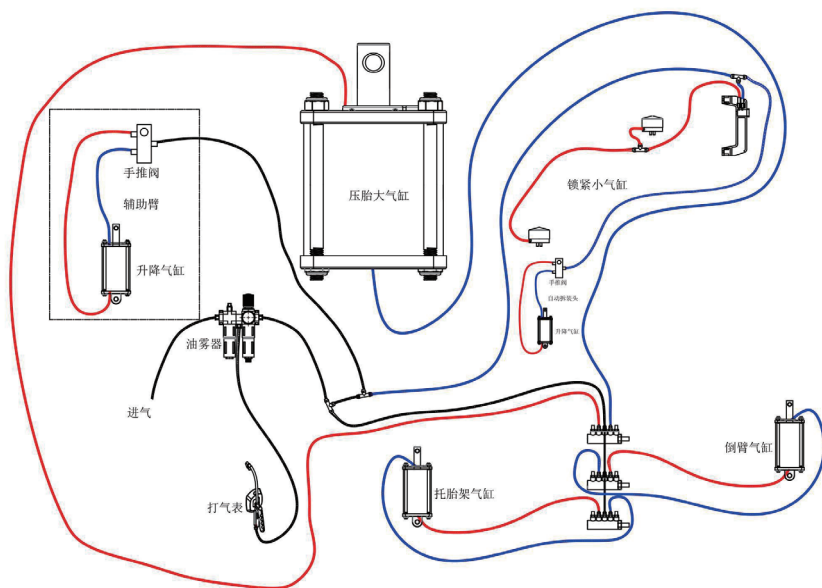
220V



380V

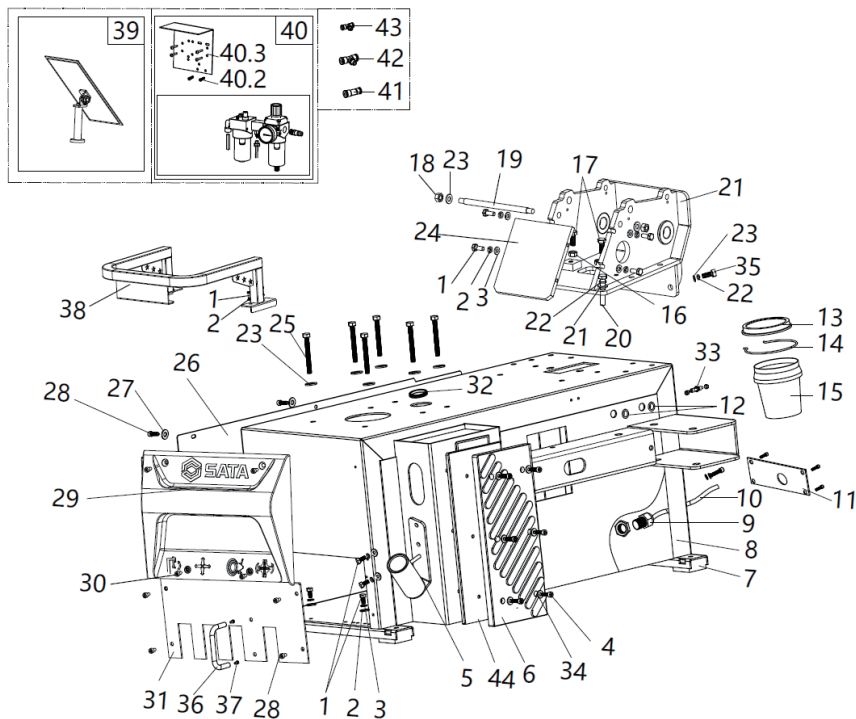


关接线图 220V/380V(99*474)



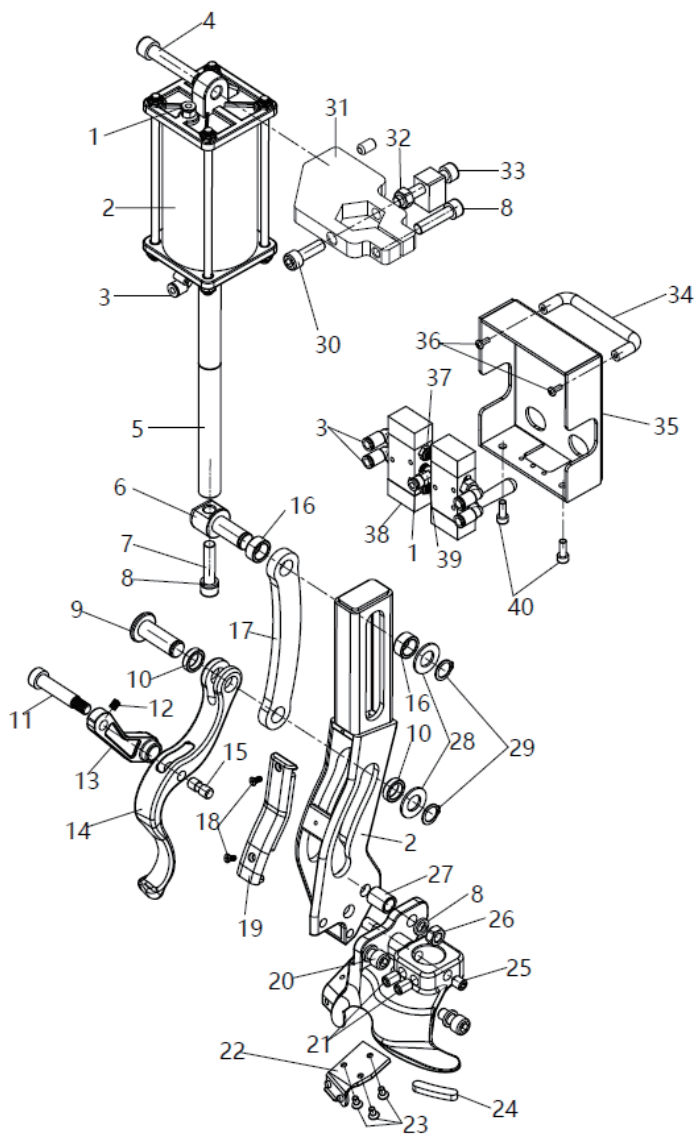
第七章 产品爆炸图

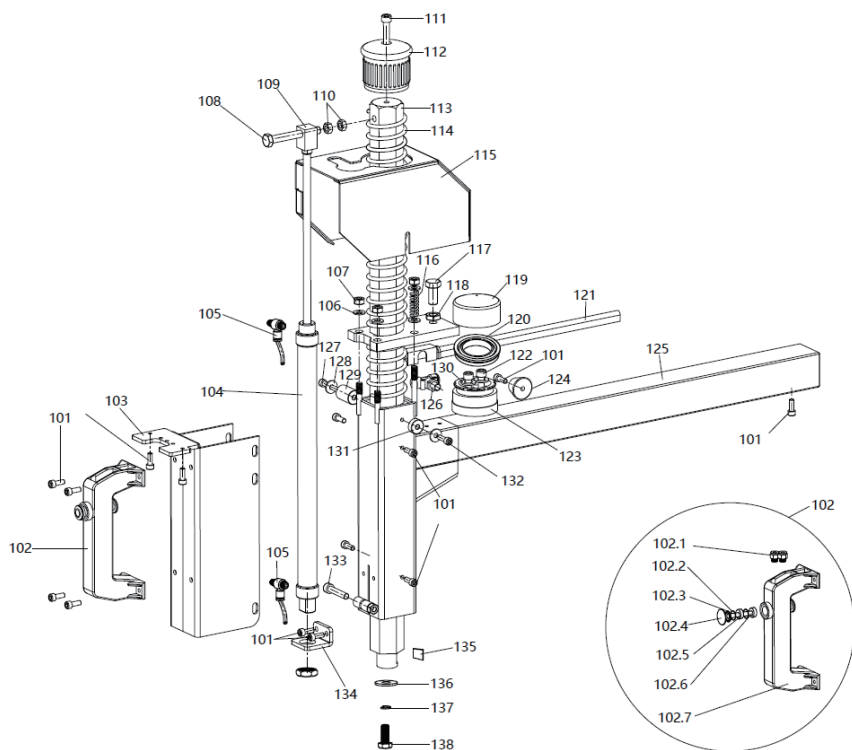
1 箱体总成:



图号	配件物料号	名称	数量
1	PAE1021-108	外六角螺栓 M8*20	10
2	PAE1021-110	平垫圈 $\varnothing 8$	5
3	PAE1021-113	弹性垫圈 $\varnothing 8$	9
4	PAE1021-308	内六角圆柱头螺栓 M8*20	7
5	PAE1027-01	锁紧杆支架	1
6	PAE1021-7	压胎胶板	1
7	PAE1021-10	橡胶脚垫	4
8	PAE1027-02	机箱	1
9	PAE1021-12	电缆螺丝 G13.5	1
10	PAE1027-03	电源线	1
11	PAE1027-04	机箱盖板	1
12	PAE1021-14	护线圈 $\varnothing 16$	2

图号	配件物料号	名称	数量
13	PAE1021-18	圆形油盒盖	1
14	PAE1021-17	油盒架	1
15	PAE1021-16	圆形油桶	1
16	PAE1021-620	螺母 M10	2
17	PAE1022-H49	外六角螺栓 M10*40	2
18	PAE1022-208	自锁螺母 M10	2
19	PAE1023H-29	调节螺杆	1
20	PAE1021-135	外六角螺栓 M10*60	4
21	PAE1025-02	倒臂支座	1
22	PAE2021-208	弹性垫圈 \varnothing 10	6
23	PAE2021-209	平垫圈 \varnothing 10	12
24	PAE1025-03	倒臂支座前盖板	1
25	PAE1021-20	外六角螺栓 M10*160	6
26	PAE1027-05	左侧板	1
27	PAE2021-311	平垫圈 \varnothing 6	6
28	PAE1021-24	内六角圆柱头螺栓 M6*10	12
29	PAE2021-115	塑料前罩	1
30	PAE2021-405	内六角圆柱头螺栓 M6*16	4
31	PAE1022-25	前盖 (倒臂)	1
32	PAE1021-19	护线圈 \varnothing 45	1
33	PAE1021-15	快拧隔板直通 2*8*5	1
34	PAE1021-114	平垫圈 \varnothing 8	9
35	PAE1021-127	外六角螺栓 M10*25	2
36	PAE1021-35	圆钢 U 型拉手 \varnothing 10	1
37	PAE2021-118	十字槽半圆头带垫螺钉 M4*10	2
38	PAE1027-07	护栏	1
39	PAE1027-08	反光镜组 (带支架)	1
40	PAE1021-33	油雾器总成 (带支架)	1
40.1	PAE1021-33A	油雾器总成 (不带支架)	1
40.2	PAE2021-405	内六角圆柱头螺栓 M6*16	2
40.3	PAE1025-28	油雾器支架	1
41	PAE1022-425	快插直通 \varnothing 6- \varnothing 8	3
42	PAE1027-09	快插三通 3* \varnothing 8	1
43	PAE1027-10	快插三通 3* \varnothing 6	1
44	PAE1027-06	可调节胎压板	1

2 滑臂总成:


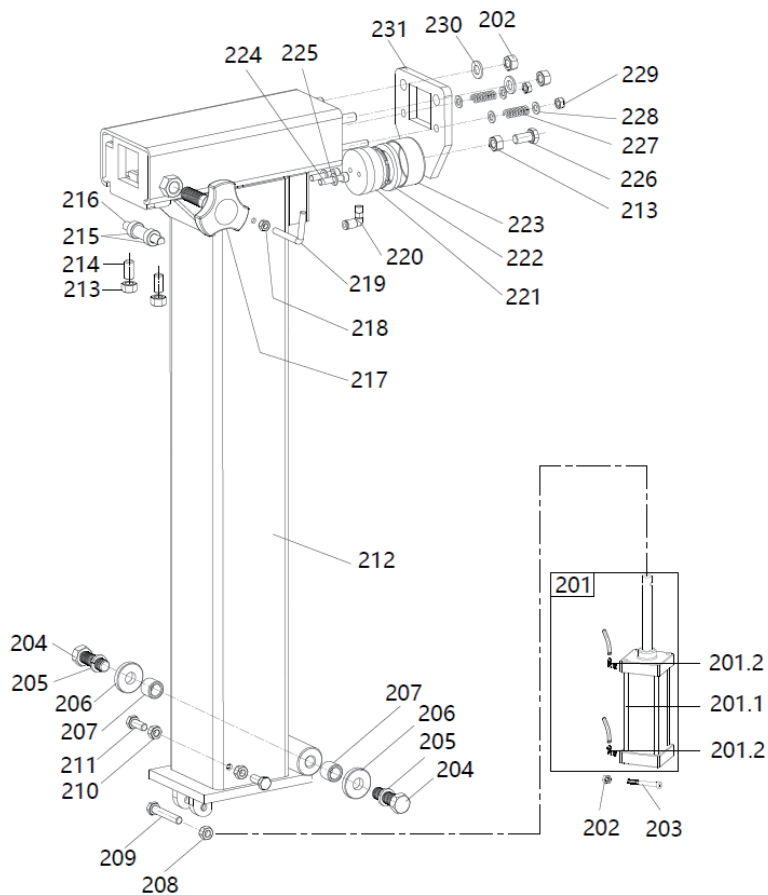


图号	配件料号	名称	数量
1	PAE1022-113	快插直通 1/8-φ6(塑料, 黑)	2
2	PAE1026-05	自动拆装头气缸 80*100	1
3	PAE1026-06	快插弯头 1/8-φ6 (塑料)	3
4	PAE1026-07	内六角圆柱头螺栓 M12*60	1
5	PAE1026-08	延长杆	1
6	PAE1026-09	钩子连接轴 2	1
7	PAE1026-10	内六角圆柱头螺栓 M10*45	1
8	PAE2021-208	弹性垫圈 φ10	4
9	PAE1026-11	钩子连接轴	1
10	PAE1026-12	钩子滚轮	2
11	PAE1026-13	塞打螺丝 M12*45(12.9 级)	1
12	PAE1026-14	内六角凹端紧钉螺丝 M6*8	1
13	PAE1026-15	自动拆装头摆杆	1
14	PAE1026-16	自动拆胎钩	1

图号	配件料号	名称	数量
15	PAE1026-17	自动拆装头圆柱销	1
16	PAE1026-18	钩子滚轮 2	2
17	PAE1026-19	自动拆装头气缸连杆	1
18	PAE1026-20	十字槽沉头螺钉 M4*10	2
19	PAE1026-21	自动拆装头支架护套	1
20	PAE1026-22	内六角圆柱头螺栓 M10*20	2
21	PAE1021-125	内六角凹端紧钉螺钉 M12*16	3
22	PAE1026-23	自动拆装头填充垫 (前)	1
23	PAE1026-24	十字槽沉头螺钉 M5*12	3
24	PAE1021-121	拆装头填充垫 - 后 [赛钢] - 白色	1
25	PAE1026-25	内六角凹端紧钉螺钉 M12*10	1
26	PAE1022-208	自锁螺母 M10	1
27	PAE1026-26	铜套 12*14*25mm[自动拆装头]	1
28	PAE1026-27	平垫圈 $\phi 16 \times 30 \times 2$	2
29	PAE1026-28	卡簧 (轴用) $\phi 16$	2
30	PAE1026-29	内六角圆柱头螺栓 M10*30	1
31	PAE1026-30	自动拆装头气缸固定板	1
32	PAE1026-31	螺母 M10	1
33	PAE1026-32	外六角螺栓 M10*80[全牙]	1
34	PAE1021-35	不锈钢 U 型拉手 10*L96	1
35	PAE1026-33	双控阀护罩	1
36	PAE2021-118	十字槽半圆头带垫螺钉 M4*10	2
37	PAE1026-34	消声器 1/8[金属短式]	2
38	PAE1022-H3	手推阀	2
39	PAE1026-35	三通接头 3*1/8[1分]2 外 1 内	1
40	PAE1026-36	内六角圆柱头螺栓 M6*12	2
101	PAE1021-24	内六角圆柱头螺钉 M6×16	13
102	PAE1022-114	控制手柄总成	1
102.1	PAE1022-113	快插 1/8- $\phi 6$	2
102.2	PAE1022-115	控制手柄 O 型密封圈 7.5*2.65	4
102.3	PAE1022-116	控制手柄阀封盖	1
102.4	PAE1022-117	控制手柄阀杆帽	2
102.5	PAE1022-118	控制手柄隔套	3
102.6	PAE1022-119	阀杆	1
102.7	PAE1022-120	控制手柄 (旧款)	1
103	PAE1026-01	支架板总成	1
104	PAE1023H-129	气缸 25*300	1
105	PAE1022-419	快插调节阀 1/8- $\phi 6$ [塑料, 黑] 带旋转	2

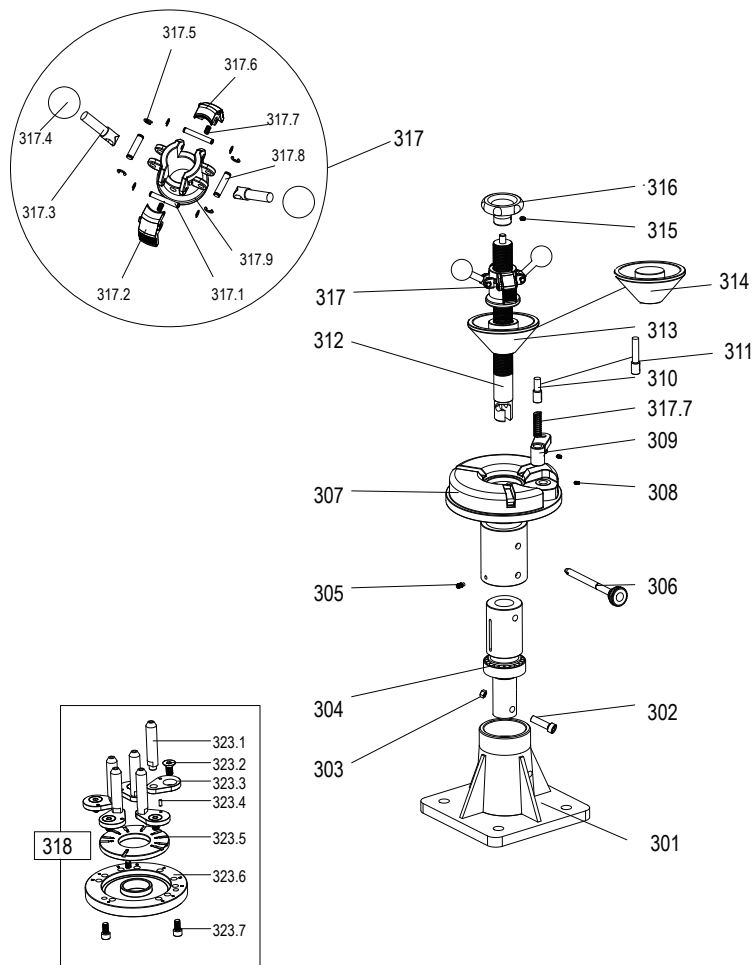
图号	配件料号	名称	数量
106	PAE1021-114	平垫圈 $\phi 8*17*1.5$	6
107	PAE1021-716	自锁螺母 M8	5
108	PAE1023H-107	外六角螺栓 M10 \times 65(全牙)	1
109	PAE1023H-108	小汽缸连接块	1
110	PAE1021-620	六角螺母 M10(白)	2
111	PAE1021-118	内六角圆柱头螺钉 M8 \times 40	1
112	PAE1021-102	六角压杆帽 S40	1
113	PAE1026-02	六角压杆	1
114	PAE1021-104	压杆弹簧 $\phi 3.5*55*600$	1
115	PAE1026-03	锁紧气缸护罩	1
116	PAE1022-107	锁紧弹簧	2
117	PAE1021-323	外六角螺栓 M12 \times 35 8.8级 黑色	1
118	PAE1021-107	螺母 M12[薄]	1
119	PAE1022-130	[氮化]锁紧气缸体	1
120	PAE1022-133	锁紧气缸-V型密封圈 60 \times 50 \times 6.5	1
121	PAE1022-136	气管导向槽	1
122	PAE1022-131	内六角圆柱头螺栓 M6 \times 40	2
123	PAE1022-134	锁紧气缸-活塞(橡胶)	1
124	PAE1022-137	环保垫脚锥形 32 \times 25 \times 20(滑臂用)	1
125	PAE1026-04	滑臂	1
126	PAE1022-110	快拧三通 1/8-2" $\phi 6*4$ (金属)中间螺纹	1
127	PAE1022-131	内六角圆柱头螺栓 M6 \times 40	1
128	PAE1021-114	平垫圈 $\phi 8*17*1.5$	2
129	PAE1023H-120	防护罩垫圈	1
130	PAE1022-132	[垫圈6]锁紧气缸密封垫(尼龙)	2
131	PAE1023H-123	防护罩垫圈 8	1
132	PAE1022-121	内六角圆柱头螺栓 M6 \times 20	1
133	PAE1021-118	内六角圆柱头螺钉 M8 \times 40	1
134	PAE1023H-128	六角压杆气缸座	1
135	PAE1021-116	六方杆鸟头锰钢垫	1
136	PAE1021-126	拆装头平垫圈 $\phi 10.5*33*8$ (镀彩锌)	1
137	PAE2021-208	弹簧垫圈 $\phi 10$	1
138	PAE1021-127	六角头螺栓 M10 \times 25	1

3 立柱总成:



序号	配件物料号	名称	数量
201	PAE1022-201	倒臂气缸总成	1
201.1	PAE1025-11	气缸 80*100	1
201.2	PAE1021-324B	快拧弯头 1/8-φ8*5	2
202	PAE1022-202	自锁螺母 M12	3
203	PAE1022-203	内六角圆柱头螺栓 M12*140	1
204	PAE1025-12	外六角螺栓 M16*55	2
205	PAE1021-303	弹性垫圈 Ø16	2
206	PAE1021-131	工作台大垫圈	2
207	PAE1025-13	轴套轴承	2
208	PAE1022-208	自锁螺母 M10	1
209	PAE1021-135	外六角螺栓 M10*60	1
210	PAE1021-625	螺母 M10	2
211	PAE1021-127	外六角螺栓 M10*25	2
212	PAE1025-14	四方立柱	1
213	PAE1021-107	螺母 M12	2
214	PAE1025-15	内六角平端紧定螺钉 M12*20	2
215	PAE1025-16	轴套轴承	2
216	PAE1025-17	滑臂滚轮销	1
217	PAE1025-18	倒臂锁紧手柄	1
218	PAE2021-126	螺母 M8	2
219	PAE1021-133	立柱挂钩	1
220	PAE1022-221	快插弯头 1/8-φ6	1
221	PAE1022-134	锁紧气缸 - 活塞	1
222	PAE1022-133	锁紧气缸 -V 型密封圈 60*50*6.5	1
223	PAE1022-130	锁紧气缸体	1
224	PAE1022-131	内六角圆柱头螺栓 M6*40	2
225	PAE1022-132	锁紧气缸密封垫	2
226	PAE1021-323	外六角螺栓 M12*35	1
227	PAE1022-107	锁紧弹簧	2
228	PAE1021-114	平垫圈 φ8	4
229	PAE1021-716	自锁螺母 M8	2
230	PAE1021-316	平垫圈 φ12	2
231	PAE1025-19	滑臂锁紧板	1

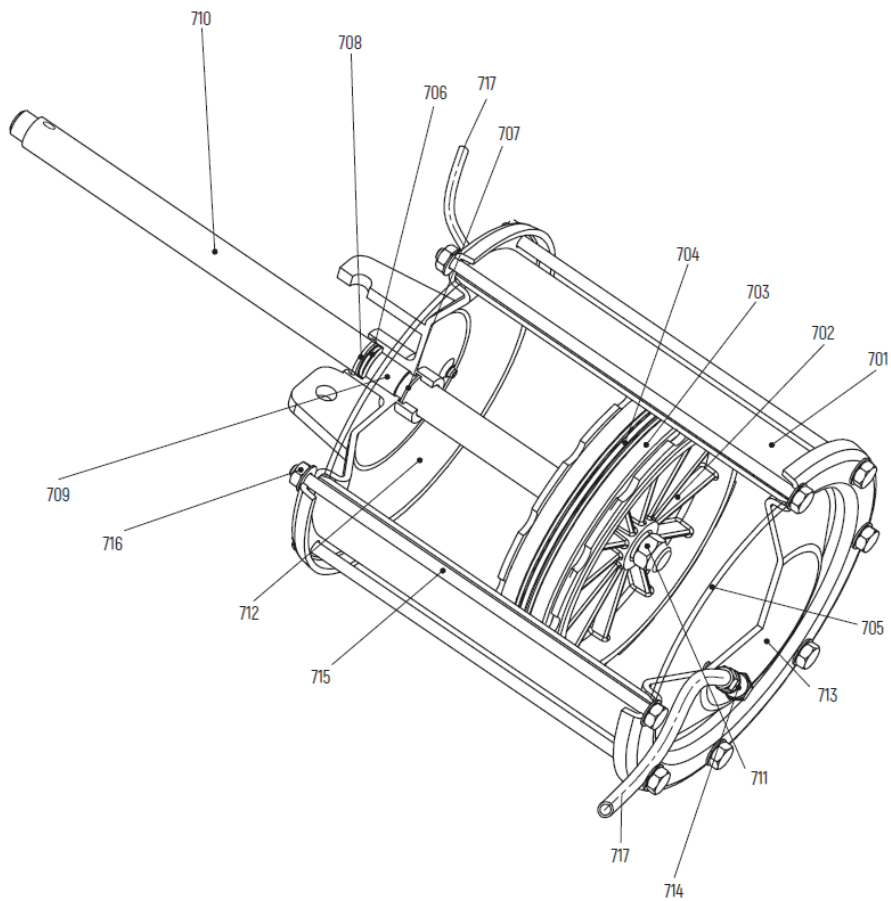
4 工作台总成:



序号	配件物料号	名称	数量
301	PAE1027-16	操作台底座组焊	1
302	PAE1027-14	外六角螺栓 M16*85	1
303	PAE1021-132	自锁螺母 M16	1
304	PAE1027-15	轴承 61914	1
305	PAE1027-19	内六角凸端顶丝 M8*16	1
306	PAE1027-20	升降操作台销轴	1
307	PAE1027-22	操作台圆盘	1

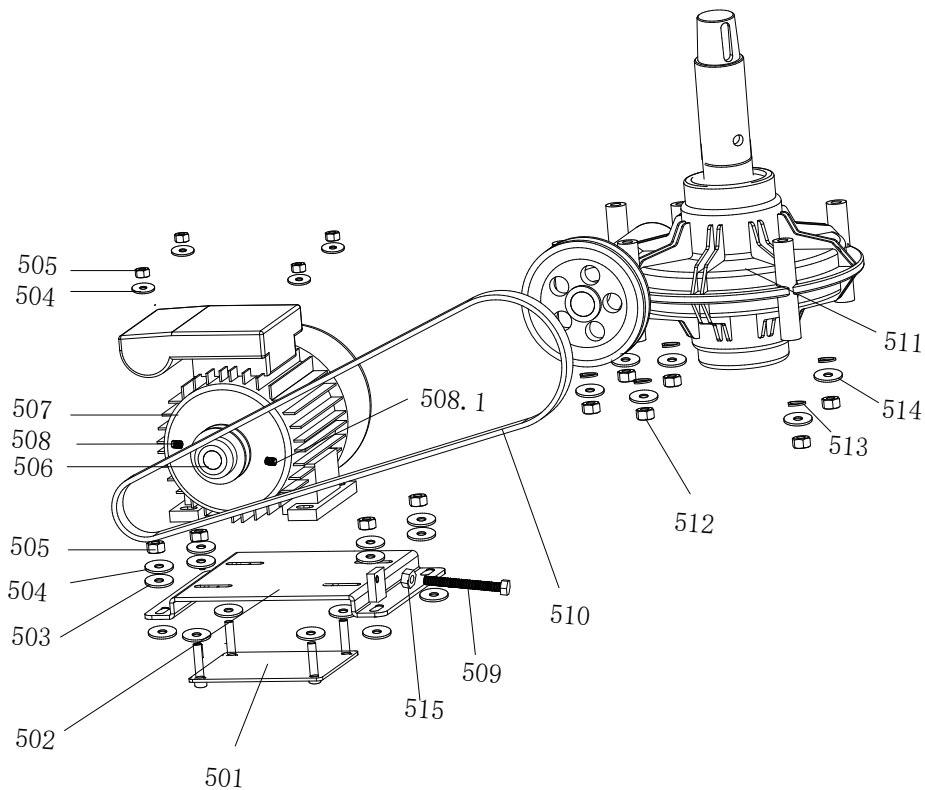
序号	配件物料号	名称	数量
308	PAE1027-23	顶丝 M5*10	2
309	PAE1027-25	操作台轮胎定位块	1
310	PAE1027-26	操作台轮胎定位销 1	1
311	PAE1027-27	操作台轮胎定位销 2	1
312	PAE1027-28	轮胎锁紧杆	1
313	PAE1027-29	锥块 (尼龙)	1
314	PAE1027-30	锥块 (铁)	1
315	PAE1027-31	顶丝 M6*10	1
316	PAE1022-H10	塑料手柄	1
317	PAE1027-104	开合螺母	1
317.1	PAE1027-32	开合螺母片销轴	2
317.2	PAE1027-33	开合螺母片 1	1
317.3	PAE1027-34	快速开合螺母手柄	2
317.4	PAE1027-35	黑球手柄 M12*40	1
317.5	PAE1027-36	E 型卡簧扣 (轴用)	4
317.6	PAE1027-37	开合螺母片 2	1
317.7	PAE1027-38	快速螺母压簧	2
317.8	PAE1027-39	手柄销轴	2
317.9	PAE1027-17	快速开合螺母主体	1
318	PAE1027-105	万能卡爪组装总成	1
318.1	PAE1027-40	卡爪支撑轴	5
318.2	PAE1027-41	内六角沉头螺钉 M12X25	5
318.3	PAE1027-42	单爪体	5
318.4	PAE1027-43	圆柱销 $\phi 5 \times 12$	5
318.5	PAE1027-44	转盘	1
318.6	PAE1027-45	万能卡爪法兰	1
318.7	PAE1026-22	内六角圆柱头螺钉	3

5 大气缸总成:



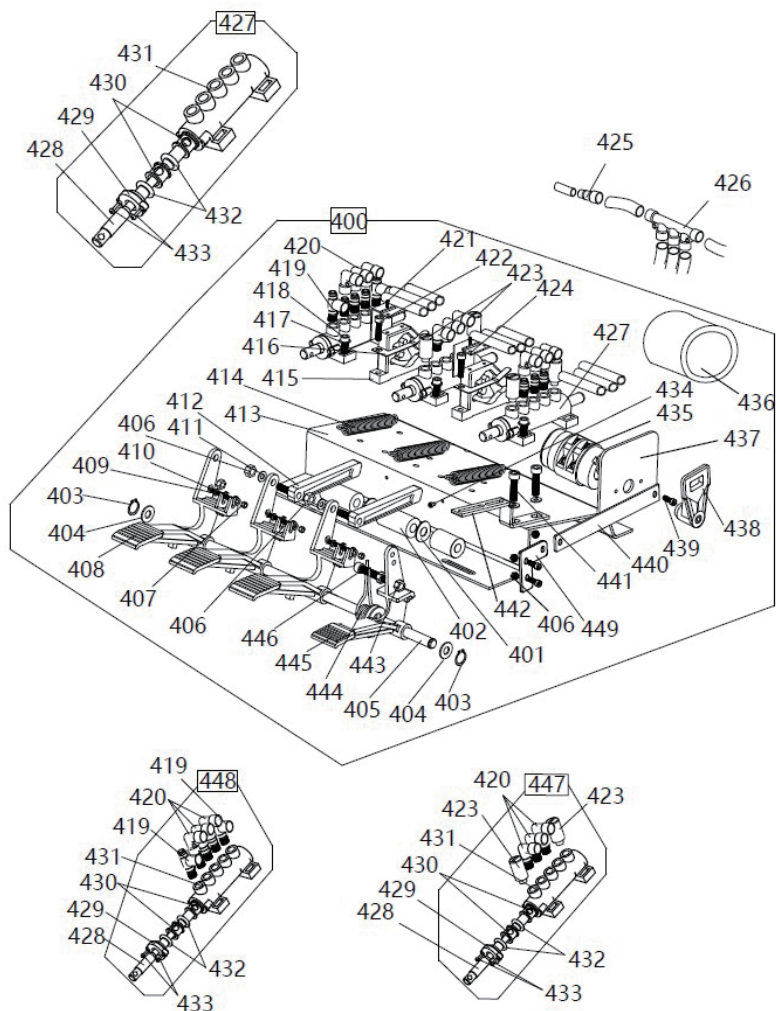
序号	配件物料号	名称	数量
700	PAE1024-31	大气缸 (总成)	1
701	PAE1024-32	大气缸缸筒 200	1
702	PAE1024-33	活塞 200	1
703	PAE1024-34	V 型密封圈	2
704	PAE1024-35	活塞导向环	1
705	PAE1024-36	O 型密封圈 $\phi 19 \times 2.65$	2
706	PAE1021-706	骨架防尘圈	1
707	PAE1021-707	密封圈 $\phi 19 \times 2.65$	1
708	PAE1021-708	$\phi 30$ 孔用卡簧	1
709	PAE1021-709	铜套 20*23*20	1
710	PAE1021-710	活塞杆	1
711	PAE1021-711	外六角螺母 M18*1.5*9mm	1
712	PAE1024-37	上缸盖	1
713	PAE1024-38	下缸盖	1
714	PAE1021-423	快插弯头 1/8- $\phi 8 \times 5$ (塑料, 黑)	2
715	PAE1021-715	外六角螺栓 M8*230mm	8
716	PAE1021-716	自锁螺母 M8	8
717	PAE1024-42	气管 $\phi 8 \times 900$ mm	2

6 电机部分:



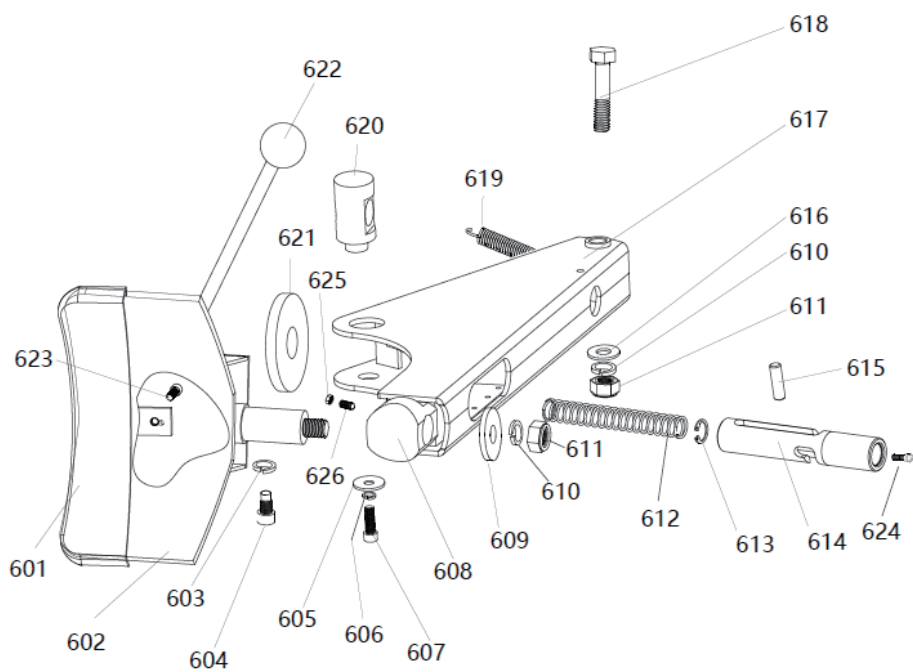
序号	配件物料号	名称	数量
501	PAE1021-501	电机支架板组焊	1
502	PAE1021-523	电机安装板组焊	1
503	PAE1021-503	电机胶垫 1	12
504	PAE1021-114	平垫圈 \varnothing 8	8
505	PAE2021-126	螺母 M8	9
506	PAE1021-506	皮带轮	1
507	PAE1024-23	电机 60HZ/110V/1.1Kw	1
	PAE1024-24	电机 50HZ/220V/1.1Kw	
	PAE1027-48	双速电机 50HZ/380V/0.8/1.1Kw	
508	PAE1021-508	内六角凸端顶丝 M8*16	1
508.1	PAE1021-508A	内六角凹端螺丝 M8*12	1
509	PAE1021-509	外六角螺栓 M8*70	1
510	PAE1027-49	• 楔• • AV13*1100• SD• •	1
511	PAE1027-50	变速箱	1
512	PAE1021-620	螺母 M10	6
513	PAE2021-208	弹性垫圈 \varnothing 10	6
514	PAE2021-209	平垫圈 \varnothing 10	6
515	PAE2021-126	螺母 M8	1
511	PAE1024-21	通用电机支架	1
512	PAE1024-22	电机橡胶垫 $\phi 10^*20^*2$	6
514	PAE1021-620	螺母 (白)M10	6
515	PAE1024-26	外六角螺栓 M8*100[全牙]	2
516	PAE1021-114	平垫圈 $\phi 8^*17$	2
517	PAE1024-27	防震胶垫	2
518	PAE1021-508A	内六角凹端紧钉螺钉 M8*12	1
519	PAE1024-28	电机皮带轮	1
520	PAE1024-29	多楔皮带 AV13*735[带齿]	1
521	PAE1021-508A	内六角凹端紧钉螺钉 M8*12	1

7 脚踏总成:



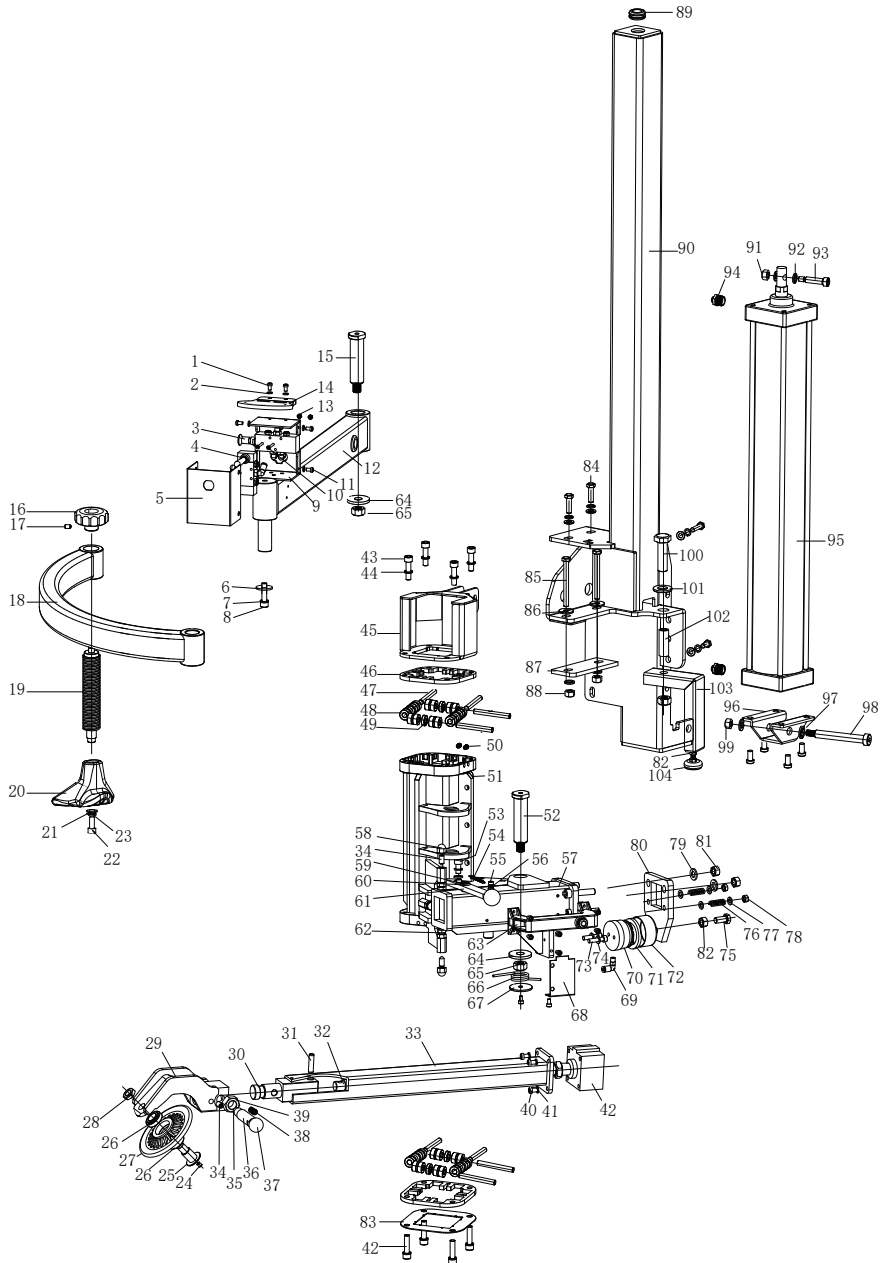
序号	配件物料号	名称	数量
400	PAE1027H-109	四脚踏组装总成	1
401	PAE1021-403	平垫圈 $\phi 12 \times 24 \times 1.5$	2
402	PAE1021-437	轴套 2	1
403	PAE1021-322	卡簧 (轴用) $\phi 12$	2
404	PAE1021-316	平垫圈 $\phi 12$	9
405	PAE1021-404	轴 $\phi 12 \times 282$	1
406	PAE1021-716	自锁螺母 M8	2

序号	配件物料号	名称	数量
407	PAE1021-438	自锁螺母 M4	3
408	PAE1021-407	大脚踏板	3
409	PAE1021-439	十字槽沉头螺钉 M4*35	3
410	PAE1021-440	平垫圈 φ4	3
411	PAE1021-114	平垫圈 φ8	2
412	PAE1021-413	凸轮连杆	2
413	PAE1022-413	脚踏支架组焊	1
414	PAE1021-435	脚踏拉簧	3
415	PAE1021-420	凸轮体	2
416	PAE1021-421	凸轮弹簧片	2
417	PAE2021-311	平垫圈 φ6	14
418	PAE1021-416	内六角圆头螺栓 M6*25	11
419	PAE1022-419	快插调节阀 1/8- Ø 6	2
420	PAE1021-423	快插弯头 1/8	9
421	PAE1021-418	十字槽半圆头自攻螺钉 3*10	4
422	PAE1021-416	内六角圆头螺栓 M6*25	4
423	PAE1021-422	消声器 1/8	4
424	PAE1021-419	凸轮罩	2
425	PAE1022-425	快插直通 φ6 转 φ8	1
426	PAE1022-426	快插五通 5*φ8	1
427	PAE1022-427	五通阀体总成	3
428	PAE1022-428	五通阀杆 12mm	3
429	PAE1021-429	五通阀盖	3
430	PAE1021-430	五通阀隔套	15
431	PAE1021-431	五通阀体	3
432	PAE1021-432	O 型密封圈 12*20*4	18
433	PAE1021-418	十字槽半圆头自攻螺钉 3*10	6
434	PAE1022-434	内六角圆头螺栓 M5*10	1
435	PAE1021-425	转换开关	1
436	PAE1021-443	开关胶套	1
437	PAE1022-8	开关支架 1	1
438	PAE1024-09	倒顺开关手柄	1
439	PAE1021-108	内六角螺栓 M8*20	4
440	PAE1022-3	开关支架 2	1
441	PAE1021-24	内六角圆柱头螺栓 M6X16	2
442	PAE1022-18	扭簧限位支架	1
443	PAE2021-126	螺母 M8	2
444	PAE1021-409	脚踏扭簧 φ3.5*20.4*70	1
445	PAE1021-410	大脚踏板	1
446	PAE1024-20	外六角螺栓 M8*30	1
447	PAE1024-10	五通阀总成 [全弯头]	2
448	PAE1021-448	五通阀总成 [带调节阀]	1
449	PAE1021-437	双速开关支架 2	1

8 铲臂总成:


序号	配件物料号	名称	数量
601	PAE1023H-41	压胎铲护套	1
602	PAE1021-602	压胎铲	1
603	PAE1021-603	弹性垫圈 $\phi 14$	2
604	PAE1021-604	定位钉	2
605	PAE1021-605	平垫圈 $\phi 8^*30^*2$	1
606	PAE1021-113	弹性垫圈 $\phi 8$	1
607	PAE1021-108	外六角螺栓 M8*20	1
608	PAE1021-608	压胎铲转轴	1
609	PAE1021-131	工作台大垫圈	1
610	PAE1021-303	弹性垫圈 $\phi 16$	2
611	PAE1021-132	自锁螺母 M16	2
612	PAE1021-612	调节套压簧 $\phi 1.5^*19.5^*125$	1
613	PAE1021-613	孔用卡簧 $\phi 20$	1
614	PAE1021-614	大气缸活塞杆调节套	1
615	PAE1021-615	大气缸活塞杆销轴 10^*33	1
616	PAE1021-616	平垫圈 $\phi 16^*30^*2$	1
617	PAE1021-617	铲臂	1
618	PAE1021-618	外六角螺栓 M16*100	1
619	PAE1024-30	铲臂拉簧 $\phi 2.5^*20^*70$	1
620	PAE1024-41	大气缸拉杆套	1
621	PAE1021-621	铲臂胶垫（薄）	1
622	PAE1021-622	黑球手柄 M16*50	1
623	PAE1021-24	内六角圆柱头螺栓 M6*10	1
624	PAE2021-405	内六角圆柱头螺栓 M6*16	1
625	PAE1021-625	螺母 M10（薄）	1
626	PAE1021-626	内六角凹端紧定螺钉 M10*20	1

9 辅助臂:

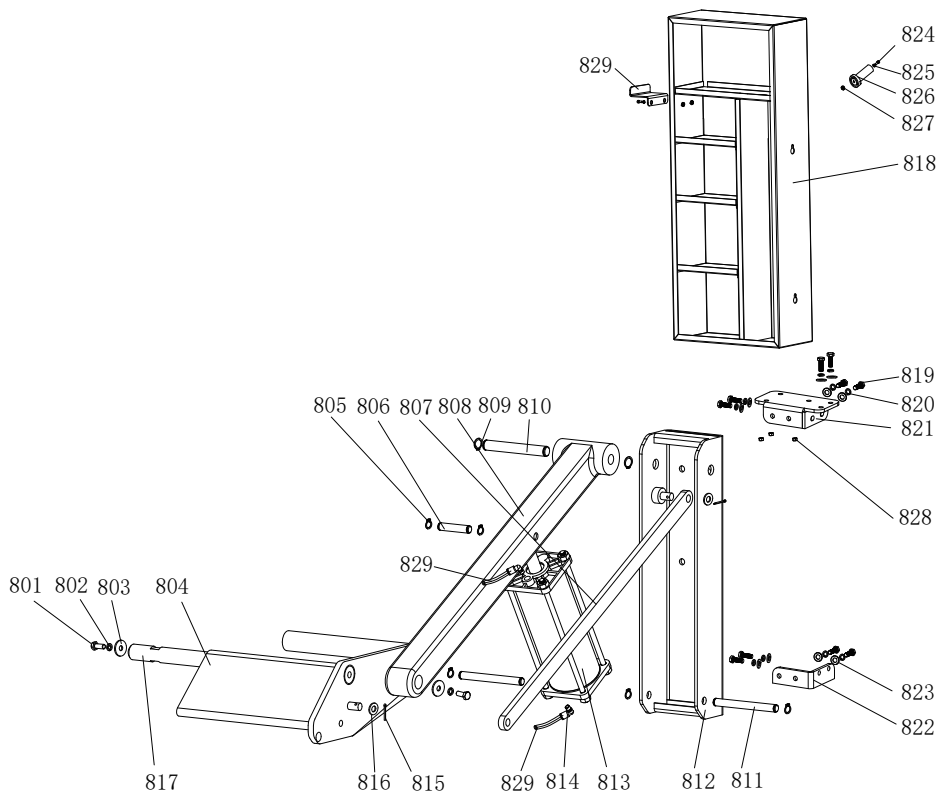


序号	配件物料号	名称	数量
	PAE1027-108	辅助臂总成	1
1	PAE2021-405	内六角圆柱头螺栓 M6*16	7
2	PAE2021-311	平垫圈 $\phi 6$	6
3	PAE1027-79	二位五通手拉阀	1
4	PAE1021-H27	手推阀总成	1
5	PAE1027-18	BD16 手推阀前罩	1
6	PAE1022-206	锁紧垫片	1
7	PAE2021-208	弹性垫圈 $\phi 10$	8
8	PAE1021-127	外六角螺栓 M10*25	1
9	PAE1027-21	BD16 手推阀后罩	1
10	PAE1021-439	十字槽沉头螺钉 M4*35	2
11	PAE1021-24	内六角圆柱头螺栓 M6*10	17
12	PAE1027-81	右横臂	1
13	PAE1021-438	自锁螺母 M4	2
14	PAE1022-H2	把手	1
15	PAE1022-H32	横臂销一	1
16	PAE1022-H10	梅花手柄 12*80(孔)	1
17	PAE1022-H11	内六角凹端紧钉螺钉 6*6	1
18	PAE1022-H12	弯臂	1
19	PAE1027-82	调节丝杆	1
20	PAE1021-H49	压胎头	1
21	PAE1021-110	平垫圈 $\phi 8$	2
22	PAE1021-308	内六角圆柱头螺栓 M8*20	1
23	PAE1021-113	弹性垫圈 $\phi 8$	6
24	PAE1027-109	内六角凹端紧钉螺钉 M10*12	1
25	PAE1027-110	压胎轮轴杆	1
26	PAE1027-83	推力轴承 32904	2
27	PAE1027-111	轮胎压轮	1
28	PAE1027-112	不锈钢螺母 M16*1.5	1
29	PAE1027-85	转动头	1
30	PAE1027-89	内滑块	1
31	PAE1027-113	$\phi 10$ 销钉	1
32	PAE1027-92	拉杆	1
33	PAE1027-91	滑动方管	1

序号	配件物料号	名称	数量
34	PAE1024-18	内六角凹端紧钉螺钉 10*35	4
35	PAE1027-87	卡销	1
36	PAE1027-88	把手套	1
37	PAE1021-H10	黑球手柄 M6*25	1
38	PAE1027-121	弹簧 \varnothing 0.9*12*35	1
39	PAE1024H-06	扁螺母 M20*1.5	1
40	PAE1027-94	内六角圆柱头螺栓 M8*25	4
41	PAE1021-113	弹性垫圈 \varnothing 8	8
42	PAE1027-93	SDA63X20-B 外牙气缸	1
43	PAE1022-27	外六角螺栓 M10*30	8
44	PAE2021-208	弹性垫圈 \varnothing 10	16
45	PAE1027-95	气缸连接耳架	1
46	PAE1022-H27	滚轮夹板	2
47	PAE1022-216	轴承钢圆柱销 M10*80	8
48	PAE1022-H29	滚针轴承带内圈 NA6900	16
49	PAE1022-218	深沟球轴承 6900z	8
50	PAE1021-508A	内六角凹端紧钉螺钉 8*12	8
51	PAE1027-96	BD16 升降滑套	1
52	PAE1027-114	BD16 横臂销二	1
53	PAE1026-29	内六角圆柱头螺栓 M10*30	5
54	PAE1027-100	拉簧 \varnothing 1.2*10*50	1
55	PAE1021-416	内六角圆头螺栓 M6*25	1
56	PAE2021-121	螺母 M6	7
57	PAE1027-101	方套组焊	1
58	PAE1027-115	不锈钢盖型螺母 M10	2
59	PAE1021-322	卡簧 (轴用) \varnothing 12	1
60	PAE1021-316	平垫圈 \varnothing 12	1
61	PAE1027-98	锁紧把手组焊	1
62	PAE1021-127	外六角螺栓 M10*25	3
63	PAE1022-114	控制手柄总成	1
64	PAE1021-132	自锁螺母 M16	2
65	PAE1021-131	工作台大垫圈	2
66	PAE1027-116	扭簧 \varnothing 35*4*3.17	1
67	PAE1027-117	BD16 扭簧垫片	1

序号	配件物料号	名称	数量
68	PAE1027-97	锁紧罩盒	1
69	PAE1022-221	快插弯头 1/8-φ6	1
70	PAE1022-134	锁紧气缸 - 活塞	1
71	PAE1022-133	锁紧气缸 -V 型密封圈 60*50*6.5	2
72	PAE1022-130	锁紧气缸体 C233011602A	1
73	PAE1022-131	内六角圆柱头螺栓 M6*40	2
74	PAE1022-132	锁紧气缸密封垫 (尼龙)	2
75	PAE1021-323	外六角螺栓 M12*35	1
76	PAE1022-107	锁紧弹簧	2
77	PAE1021-114	平垫圈 Ø8	4
78	PAE1021-716	自锁螺母 M8	2
79	PAE1021-316	平垫圈 Ø12	2
80	PAE1025-19	滑臂锁紧板	1
81	PAE1022-202	自锁螺母 M12	2
82	PAE1021-107	螺母 M12[薄]	2
83	PAE1022-H26	滚轮盖板	1
84	PAE1022-H49	外六角螺栓 M10*40	6
85	PAE1022-H50	外六角螺栓 M10*120	2
86	PAE2021-212	加厚平垫圈 Ø10	8
87	PAE1022-H52	立柱固定夹板	1
88	PAE1024H-02	螺母 M10	2
89	PAE1022-H53	护线圈 φ28-5	2
90	PAE1027-102	BD16 立柱组焊件	1
91	PAE1022-208	自锁螺母 M10	1
92	PAE1021-317	弹性垫圈 φ12	1
93	PAE1022-H56	塞打螺丝 M12*40	1
94	PAE1022-H57	快插直通 1/2-φ6	2
95	PAE1027-103	气缸 (不带座) φ100x700	1
96	PAE1022-H61	气缸底座	1
97	PAE1021-303	弹性垫圈 φ16	1
98	PAE1022-H63	塞打螺丝 M16*110	1
99	PAE1022-202	自锁螺母 M12	1
100	PAE1027-118	外六角螺栓 M16*120	1
101	PAE1021-616	平垫圈 φ16	1
102	PAE1027-119	铲臂座套	1
103	PAE1027-120	BD16 支撑杆本体组	1
104	PAE1022-H66	带橡胶减震脚杯垫脚	1

10 托架架总成:



序号	配件物料号	名称	数量
801	PAE1021-127	外六角螺丝 M10x25	2
802	PAE2021-208	弹性垫圈 ϕ 10	2
803	PAE2021-212	平垫圈 ϕ 10	2
804	PAE1027-62	托胎架 (喷漆)- 户外皱纹黑	1
805	PAE1021-322	卡簧 (轴用) ϕ 12	4
806	PAE1027-63	气缸插销二	1
807	PAE1027-64	托胎转杆	1
808	PAE1027-65	托胎转臂	1
809	PAE1026-28	卡簧 ϕ 16	2
810	PAE1027-66	转臂销	1
811	PAE1027-67	气缸插销一	1
812	PAE1027-68	托胎架支座	1
813	PAE1027-69	C955 气缸 75*162-316	1
814	PAE1022-221	快插弯头 1/8- ϕ 6	2
815	PAE1027-70	ϕ 3 开口销	2
816	PAE1021-316	平垫圈 ϕ 12	2
817	PAE1027-71	连接轴	1
818	PAE1027-72	储物箱组件	1
819	PAE1022-27	外六角螺栓 M10*30	13
820	PAE2021-208	弹性垫圈 ϕ 10	13
821	PAE1027-73	托胎架上支架组焊	1
822	PAE1027-74	托胎架下支架组焊	1
823	PAE2021-209	平垫圈 ϕ 10	13
824	PAE1022-121	内六角圆柱头螺栓 M6*20	1
825	PAE2021-311	平垫圈 ϕ 6	1
826	PAE1027-75	工具挂柄	1
827	PAE1022-H14	自锁螺母 M6	3
828	PAE1022-208	自锁螺母 M10	3
829	PAE1027-121	压胎辅助器挂板	1

Technical parameters	External rim diameter	Inner rim diameter	Rim width	Max wheel diameter	Big cylinder push-pull force
AE1027H	13-28"		350mm	1100mm	2500 kgf
AE1027H-3					
Technical parameters	Big disk speed	Work pressure	Work noise	Outer box size	Gross/net weight
AE1027H	6 -12 rpm	8-10 bar	≤ 70 db	1380*1130*1840mm	432Kg/380 Kg
AE1027H-3					

Check the product immediately after unpacking to ensure that the product is in good condition. If any parts are missing or damaged, please contact the Customer Service Department of SATA Automotive Technology (Shanghai) Co., Ltd by phone:400-820-3885, 800-820-3885.

Please record the product serial number:

Note: If the product does not have a serial number, record the date of purchase.

Please keep the instruction properly:

- 1) The instruction contains information on safety warnings, installation, maintenance, and troubleshooting of the product. Keep it properly.
- 2) Please record the serial number (or purchase date) of this product on the front page of the instruction, and keep it in a dry and safe place for reference.
- 3) Please fully understand the contents of the instruction for correctly using the product.
- 4) This product has been insured with product liability insurance.



Chapter I Safety precautions

- Improper operations can result in personal injury and equipment damage.
- Please read and understand the instructions carefully before use.
- Keep children and other unauthorized personnel away from the work area.
- Ensure that the equipment is connected to the correct power supply and air source and is reliably grounded.
- Please use the device on a flat, level, dry and reliable bearing surface.
- To avoid accidental startup, ensure that the equipment is shut down and the power supply is disconnected before maintenance.
- Keep the guards and safety devices in the correct position and in working order.
- Keep the work area clean and well lit. Messy or dark areas can cause accidents
- Avoid overload. Otherwise, the accident liability is not covered by the insurance.
- Keep the device away from heat and fire sources. High temperature may cause damage to the device and sealed components.
- Avoid hazardous environments and do not use equipment in wet environments or expose it to rain.
- No untrained personnel is allowed to use the equipment, and it is not allowed to disassemble or modify the equipment without permission.
- Install the wheels correctly, and fasten them to the equipment in a proper way according to different hubs.
- Check carefully before use each time, and do not use it if there is oil leakage, and loose or damaged parts or accessories.
- Let professional personnel with professional maintenance qualification maintain the equipment reasonably. If parts need to be replaced, please use the original parts.
- When operating, wear safety shoes, protective glasses and work gloves in accordance with the relevant national safety protection regulations. Relevant SATA products are recommended.
- It is strictly prohibited to use the device in such circumstances as after drinking, lack of energy and concentration, drowsiness under the influence of drugs or unconsciousness.

Warning

The cautions, warnings, instructions, etc. contained in the instruction do not cover all possible situations. Operators must understand that daily care and professional knowledge are indispensable factors in the operation of this product.

1.1 Warning label



Keep your hands away from the tires during operation

Wear protective equipment when operating

Read the instruction carefully before use



Danger of electric shock!



Note: Do not touch the sidewall of the tire with your hands when pressing the tire



Do not put any part of the body under the disassembling and assembling head



When clamping the rim, keep your hands and other parts away from the area between the pawl and the rim



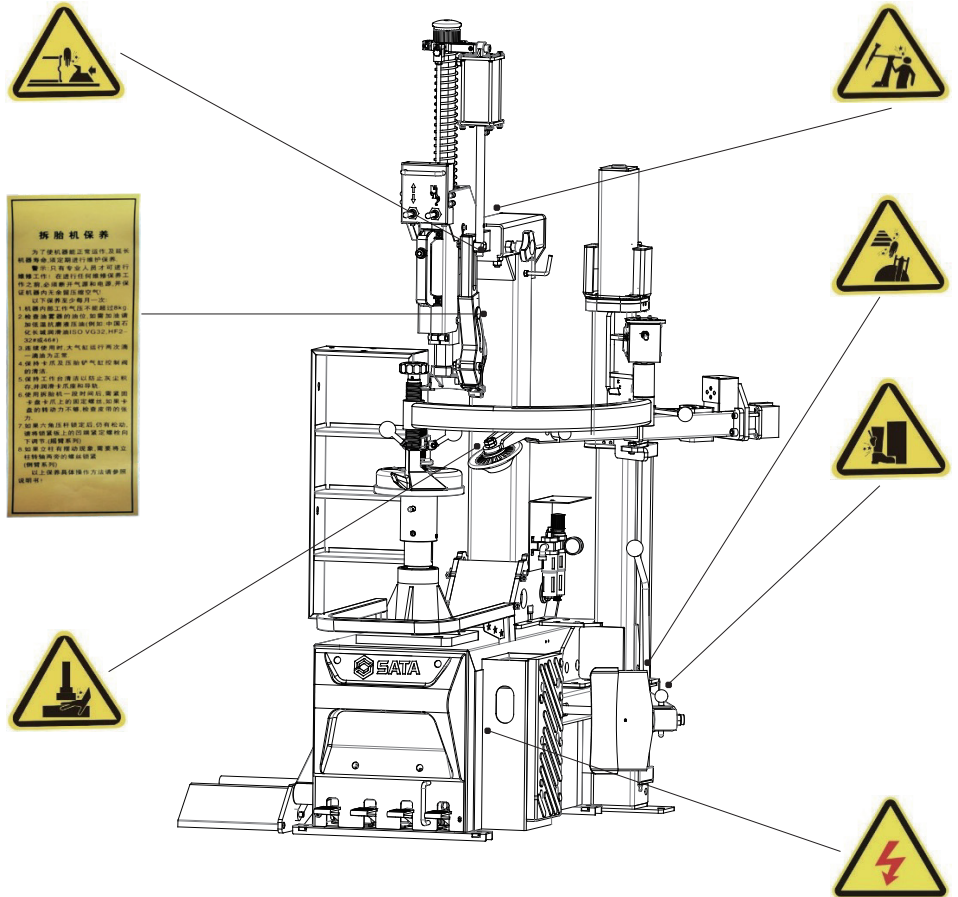
When pressing the tire, do not stand between the shovel blade and the tire to avoid injury



Avoid injury due to bending backward of column

1.2 Diagram of safety mark location

Keep the safety mark intact, and replace it immediately if blurred or missing. Keep the safety mark clearly visible to the operator with meaning clearly indicated





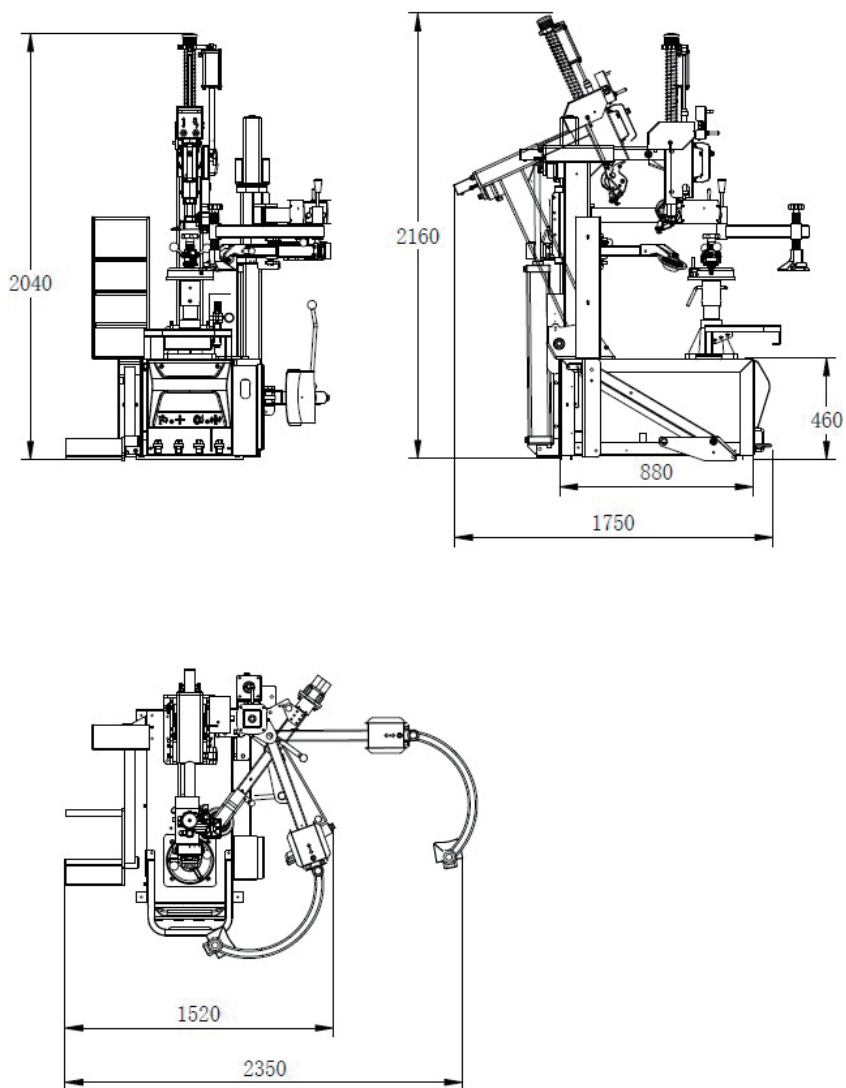
Chapter II Installation instructions

The installation of the tire changer must be done by professional personnel. Safe and effective use depends on proper installation. If you have any questions, please contact an authorized SATA distributor.

2.1 Device size and usage space

- The tire changer must be placed on a solid flat floor and bolted in place.
- The location where the tire changer is installed must have power supply and air source nearby, connected together.
- Adequate operating space shall be left around the tire remover at the place suitable for installing the tire remover.
- Make sure there is enough space above and behind the selected position for the auxiliary or inverted arm to work properly
- At least 500mm operation space should be left on the right side and front side of the tire changer for tire removal and installation, as well as pressing.

AE1027H/AE1027H-3 Dimensional drawing

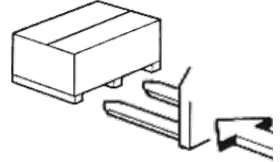


2.2 Safety rules

- The equipment should be operated by professional or trained personnel.
- The company is not responsible for any unauthorized operation of the equipment (especially the electrical part).
- Any handling of the electrical part should only be done by professional personnel.

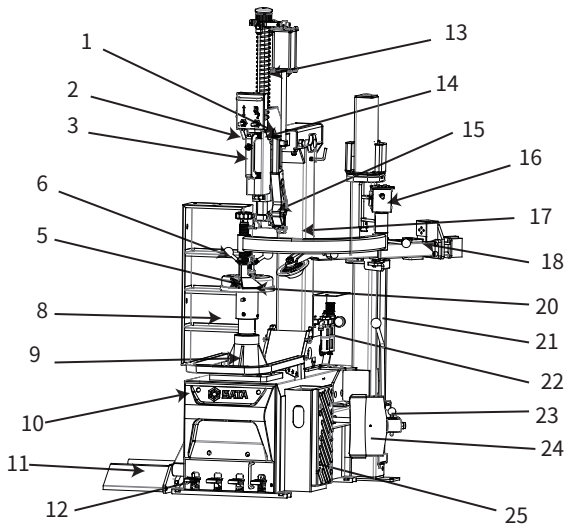
2.3 Transportation/unpacking

- Use forklift to move, with the lifting position shown in the figure on the right.
- Remove the package and check the equipment for damage.
- Keep packing materials away from children to avoid danger.



Note

The surface of the equipment is coated with a layer of special antirust oil, which is easy to catch dust, and should be removed as far as possible when necessary.



1. Cross arm assembly	10. Enclosure	19. Auxiliary arm tire pressure roller
2. Lifting control handel of hexagon head screw of tire changer head	11. Foot pedal assembly	20. Auxiliary arm tire pressure block
3. Two-way locking control handel	12. Lift	21. Auxiliary arm cylinder
4. Tire inflator	13. Hexagon head screw of tire changer head	22. Filter, regulator and lubricator assembly
5. Center locking lever	14. Tire changer head hook lifting control valve	23. Large cylinder piston rod length adjustment sleeve
6. Quick locking nut	15. Turnable tire changer head assembly	24. Tire press shovel
7. Adjustable center operating panel	16. Auxiliary arm lifting control valve	25. Tire press rubber liner
8. Tool cabinet	17. Back-bending post	
9. Spine shaft bearing support	18. Dual cylinder differential auxiliary arm assembly	

2.6 Power connection

- Check whether the power supply system is compatible with the technical parameters on the nameplate of the machine before installing the connection, the power grid connected to the machine must have a protective device, and there is good shell grounding protection, and install a leakage automatic air switch on the main power supply, and the leakage power supply is set within 50mA/s.
- Check the direction of rotation of the motor (this check is only for machines equipped with three-phase motors). Press the turntable forward/reverse control pedal turntable should rotate clockwise, like a turntable

If you rotate counterclockwise, you can arbitrarily swap the connector of the two-phase cable at the switch, and the manufacturer is not responsible for any damage caused by failure to follow the above instructions.

- Note: If the machine does not have a power plug, the user should install a power plug consistent with the machine voltage.

2.7 Air connection

- This machine requires an air pressure of 7-10bar (100-140si) to ensure this pressure range to meet the use of the machine, if the dry 7bar (100osi) is low, the tire pressure force of the tire shovel may not be enough for a certain tire. The newly installed compressed air line should be blown before use to avoid damage to the new machine by debris in the pipe. The user should regularly drain the air compressor. Connect the joint on the machine lubricator with the air compressor system, and pay attention to observe whether the pressure of the air pressure gauge on the lubricator meets the requirements specified in the air pressure setting after connection, if it does not meet the requirements, please check whether the pipeline or air compressor is faulty.

2.8 Machine test

- Press the two-way locking control handle (2) The cross arm and longitudinal hexagonal bar automatically lock.
- Press the two-way locking control handle (2) again to automatically lock and loosen the crossarm and longitudinal hexagonal rod, and automatically rise/fall.
- Flip the tire head flip control handle (14) Dial the control handle to remove the tire head flip hook, and dial down the control handle to remove the tire head flip hook down.
- Six-square lever control handle of the tire removal head (3) Dial the control handle to remove the tire head hexagonal rod to rise, dial down the control handle, the six-square rod of the tire removal head to descend.
- Press the turntable to rotate the pedal (11) The turntable rotates clockwise and continues to step down for a quick spin. The up-lift pedal turntable rotates counterclockwise.
- Tire lift pedal (11) controls the lift to rise, descend and stop at any height.
- Press the column backward pedal (11) to control the column back, forward tilt and stop at any angle, press the tire shovel pedal (11) tire pressure cylinder to start moving.
- Auxiliary arm lifting control handle (18) Dial up the control handle auxiliary arm to rise, dial down the control handle to assist the arm to fall.



Chapter III Operation Instruction

Preparation before tire removal:

- Drain all the air in the tyres.
- Remove the balance block on the outer edge of the tire.
- Adjustable to tire width.
- The height of the center operating panel.

(Under normal circumstances, the operating disc is adjusted to the highest place for formal tires, and the operating disc is lowered to a low place only when disassembling and installing the reverse wide tire)

To remove the tyres, please follow the steps below:

- Place the tyre between the dry press shovel and the rubber liner so that the tire blade is placed between the rim and the rubber tire, and then press the tire pedal to separate the tire from the rim (fig 2) When pressing the tire, use a brush to lubricate the flange with grease or lubricant.

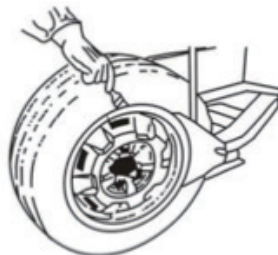


Figure 2

- Lift the tire to the plane of the operating table with a lift, lay the tire flat, and align the swing pin on the operating disc with any screw holes in the tire, locking the tire on the operating disc with a cone, locking screw and quick nut.

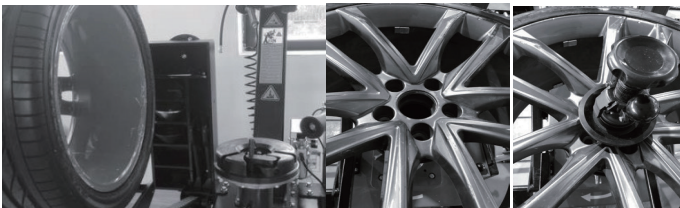


Figure3

If the tire is hard, the flange is attached to the wheel flange and is not disengaged, and the tire removal head cannot be placed in the disassembly position, please do the following:

- 1 Place the tire roller near the rim (about 3-5mm at the wheel base rim) and lock the handle.
- 2 Operate the auxiliary arm lift switch, move the tire roller down, press the tire down, press the turntable switch, so that the fetal edge is completely separated from the wheel flange (the fetal edge is pressed down in the second rim or in the lower position), leaving enough space for the tire removal head to place the tire removal head.



Figure 4



Figure 5

-Place the disassembly head in the working position and lock it with the locking lever. To avoid scratching the rim, ensure that the disassembly head protects the plastic plane and the rim with a 2mm clearance. [Figure 4]

Note: Because the roundness and parallelism of the rim using it for a long time is difficult to guarantee, when the disassembly and assembly head is placed in the working position, the highest point of the rim spokes and the most convex point of the rim roundness should be found first. Then use these two points to fix the working position of the disassembly and assembly head to avoid scratching the rim when disassembling the wheel.

- Operate the auxiliary arm lift switch, place the tire roller about 5mm away from the wheel flange, lock the handle, press the tire down about 100mm, dial the disassembly head flip switch, and the disassembly head hook is turned down. [Figure 5]

-Toggle the auxiliary arm lift switch, lift the auxiliary tire roller, and the auxiliary arm rises at the highest point.

-Move the auxiliary tire press arm, place the auxiliary tire press block at the 180 position opposite the disassembly head, dial the auxiliary tire press head lift switch, and press the tire down to the second rim position of the rim to avoid straining the tire when the bird head hook flips up. [Figure 6]



Figure 6



Figure 7

-Turn the flip switch on the disassembly head to hook the tire. [Figure 7]

-If the flange is close to the rim or not completely separated or the tire is stiff, and the disassembly head hook cannot fully hook the tire flange, please follow these steps:

- 1 Operate the tirepress head lift switch to lift the tire-press head and remove the tire-press auxiliary arm.
- 2 Dial down the disassembly and flip control switch, turn the hook down, place the tire head 3mm from the wheel flange, and lock the handle.
3. Operate the auxiliary arm lift switch, so that the tire press wheel presses down the tire, the bead edge is pressed under the hook, and the disassembly and installation flip control switch is dialed up, and the hook is turned over to lift the tire press head,and remove the auxiliary tire pressure arm.
- 4 Manipulate the tire pressure wheel to press the tire down, press the turntable switch, and detach the tire from the rim (the tire flange and the wheel flange can be completely separated at the second rim or further down Repeat the



above hooking steps [6, 7, 8, 9] until the rim is hooked.

-Place the tyre under the bead hooked by the disassembly head hook (fig 8), point the turntable forward/reverse pedal and let the turntable rotate clockwise until the bead comes off (Fig

9) In order to avoid damage to the inner tube, if there is an inner tube in this procedure, it is recommended to remove it from the right side of the tire valve about 10cm. If the tire removal is blocked, stop immediately and let the turntable turn counterclockwise to eliminate the obstacle.



Figure8



Figure9

If you have an inner tube, remove the tube and remove another rim procedure:

-Separate the inside tyre if the outside of the tire has been detached and the inside is still attached to the cylinder ring, please follow these steps:

- 1 Move the auxiliary tire pressure arm and auxiliary tire roller (before moving, remember the scale of the roller);
- 2 Press the tire roller to the inside tire and rim position according to the scale, and lock the roller hexagonal handle
3. Operate the auxiliary arm lift switch and lift the roller to separate the tire from the rim (it can be repeatedly operated in different positions of the tire until it separates) (Figure 10)



Figure 10



Figure 11

Note: Lifting roller Note The roller must not be placed under the rim, otherwise it will damage the roller and the tire.

-Pull the flip switch of the disassembly head to turn the hook of the disassembly head down, pull the auxiliary tire press wheel 5mm inside the rim, toggle the auxiliary lifting switch to hold up the tire, and place the bead edge on the disassembly head hook (Fig. 10).

-Turn on the head flip switch, hook the tire rim with the head hook, and then turn on the auxiliary arm lift switch, and the roller rises 2cm above the upper edge of the rim (fig. 11), press the motor to turn the pedals, separate the tire from the rim, then tilt the tire 45° toward the column (fig. 12), step back on the post, and pull the tire back after the post (fig. 12).



Figure 12



Figure 13

To install the tires, please follow the steps below:

Before installing the tires, check that the tires and rim dimensions are the same.

- Lock the rim on the operating panel.
- Place the bead above the rear of the disassembly head (fig. 14) while placing the tyre at the bottom of the disassembly head hook (fig. 15) and pressing the tummy.



Figure 14



Figure 15



Figure 16



Figure 17

- Lubricate the rim with paste or fluid (fig. 16) and turn the turntable clockwise so that the flange falls into the rim groove. If you have an inner tube, put it on the rim and repeat the steps before installing the upper part of the tire.
- Install the upper part of the tyre, place the flange above the rear of the disassembly head (fig. 14), place the tyre at the bottom of the disassembly head hook (fig. 15), shift the end face of the auxiliary tire press wheel 5mm from the rim, lock the handle, and pull down the auxiliary arm lift switch to lower the auxiliary tire press wheel to the 1/2 rim plane (fig 16).
- Place the tire block near the rim and approximately 200mm from the left side of the wheel and turn the auxiliary lift



switch to depress the tire on the second turn of the rim (fig. 17)

- Press the turntable pedal and let the turntable spin clockwise and the tire will fit easily into the rim. If the tire installation is blocked, stop it immediately and let the turntable turn counterclockwise to eliminate the obstacle until the tire is smoothly loaded into the rim.

Note: During the rotation of the turntable, the tire installation operation to the final stage can be stopped for many times before starting, and the auxiliary hand is appropriately lifted to avoid straining the tire.

-Aeration

- Be extremely careful when inflating tires and strictly follow the instructions below, because the design of the tire remover is not protected from sudden punctures
- A puncture can cause serious injury or even death to the operator. Double-check that the rim and tire are the same size. Check that the tyres are free of defects or wear before inflating. Check the pressure after each jet. In any case, do not exceed the pressure recommended by the manufacturer to keep your body and hands as far away from the tire as possible.
- Inflation of tires using an inflation meter Under the standard version, our tire remover is equipped with an inflation meter. The inflation procedure is as follows:
 - 1) Connect the inflation gauge to the tire valve
 - 2) Finally, check the fit of the tire and rim dimensions
 - 3) Check that the tyre port is adequately lubricated and, if necessary, deeper lubrication
 - 4) Inflate, check the air pressure of the inflatable meter
 - 5) Continue to inflate and check the air pressure while inflating

The danger of explosion!

- Do not inflate tires more than 3.5 bar (51 psi); The tires before inflation are removed from the large disc and placed in a special protective cage for inflation. Never exceed the manufacturer's recommended inflation pressure, hands and body are located behind the inflated tire; Inflatable operations are carried out only by specially trained and authorized personnel, and no other person may operate or stay near the tire remover.
- During this process, the noise can reach 85 decibels. Noise protection is recommended

Chapter IV Repair and maintenance

Cleaning and routine maintenance work must be carried out by professionals according to the following guidelines of our factory:

- Before carrying out maintenance, cut off the power supply and air supply.
- Check the oil level of the oil cup of the lubricator oil cup, if you need to add oil, first cut off the power supply and gas source, unscrew the oil cup by hand, and use 32# hydraulic oil to fill the oil cup 2/3 of the oil volume.



Pull out the cover and rotate it to adjust the pressure in a range of 8-10bar



Press the lid down to lock the pressure



Check the water level height of the steam-water separator regularly, which cannot exceed 50% of the height of the separator; turn the locking button to manually drain water if necessary.



Check the lubricating oil level daily, and open the oil cap to add oil when necessary. Note that it is forbidden to use lubricating oil that has been exposed to air for a long time.



Check the lubrication condition daily to ensure that the lubricant drops into the oil atomizer when the pedal is stepped on. Use a screwdriver to adjust the oil atomizer adjusting screw if necessary.

- Clean the condensate in the oil cup and oil-water separator regularly.
- Clean the operating panel, locking rod and quick nut regularly, and fill the appropriate amount of lubricating oil.
- Regularly check and tighten all bolts connecting parts.
- Keep the hexagonal rod dry and clean (clean with diesel) and drip lubricating oil in moderation.
- Check the tension of the drive belt, and adjust the adjustment rod appropriately when it needs to be adjusted to achieve the role of tensioning the drive belt.
- Keep the machine and work area clean to avoid dust entering the moving parts.
- Where the bonding surface with relative displacement and the bonding surface with relative friction should be lubricated with lithium-based grease oil every week.
- Clean the silencer on the control valve and fast valve regularly to avoid affecting the normal operation of the cylinder, and unscrew the silencer to clean with water or blow the dirt with compressed air.



- After each tire removal and tyre, the debris on the operating plate and box should be cleaned to avoid wear and tear of the operating plate due to excessive debris during use.
- If the hexagonal rod cannot be locked, you can use the wrench to adjust the stop nut down or move the screw on the card plate to achieve the application effect.

Maintenance and servicing during machine decommissioning

- If the machine is not used for a long time, the power supply and gas source should be cut off, and the residual gas inside the machine should be drained, the surface of the machine should be wiped clean, except for the spraying surface, the rest should be oiled to prevent rust, and cover it well to avoid moisture and dust. When the machine is put back into use, all functions should be checked one by one according to the aforementioned content.

Move the machine

- The tire disassembly machine needs to be moved by forklift.
- Cut off the power supply and air supply, loosen the expansion screw that holds the base, pry the base up, insert the forklift fork foot under the base, install it in a new position, and fix it smoothly.

Note: The position of the tire disassembler must comply with safety specifications.

Scrapping of machines

- If it is decided that the machine is no longer in use, the power supply and air source should be removed, and the machine should be disassembled and sorted, such as metals, plastics, oils, etc., and then disposed of according to local regulations.

Fault/cause/troubleshooting

First of all, check whether the power supply and air source meet the conditions of use of the machine!

The turntable rotates only in one direction

- Cause: The transfer switch is damaged
- Solution: Replace the transfer switch

The turntable does not turn

- Cause: Belt damage, universal steering head damage, reducer damage, motor capacitance or motor problems.
- Fix: Replace damaged belts or reducers or steering switches or capacitors or motors, and check for loose power plugs and sockets.

The operating disc does not lock the rim properly

- Reason: The locking screw does not have a pin, and the operating disc latch is not inserted into the hub screw hole or quick nut cut.
- Solution: Follow the correct locking procedure, or replace the quick nut.

Air leakage in pneumatic components

- Cause: Broken seal or damaged element
- Solution: Find out the appropriate seal or element replacement

Warranty Description

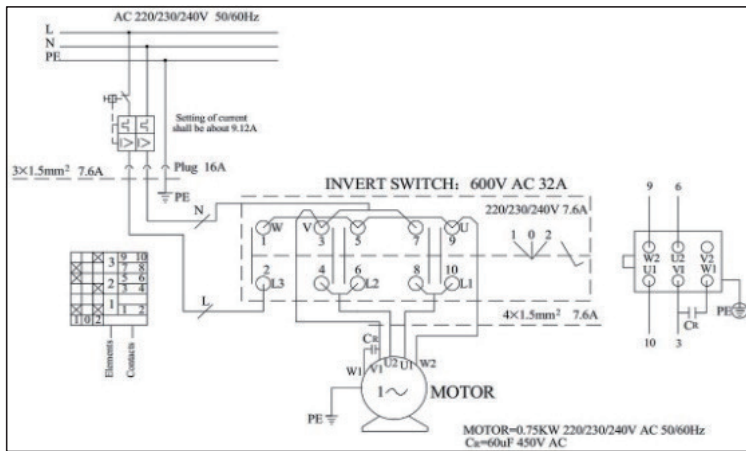
The whole machine is guaranteed for one year, and the warranty service is only valid under normal use. All man-made damage (such as: the user does not use in accordance with the manual, self-assembly of accessories not provided by the company, equipment damage caused by user transportation and other accidents, modification not approved by the company, damage caused by natural disasters, accessories need to be updated beyond the warranty period, etc.) are not covered by the free warranty, and maintenance will be charged as usual.

- All nameplates, stickers, etc. involved in the production sound and product image on the equipment shall not be torn, otherwise the warranty will not be given. After-sales service hotline: 02160615662
- Skadden Automotive Technology (Shanghai) Co., Ltd. has the final right to interpret this warranty policy.

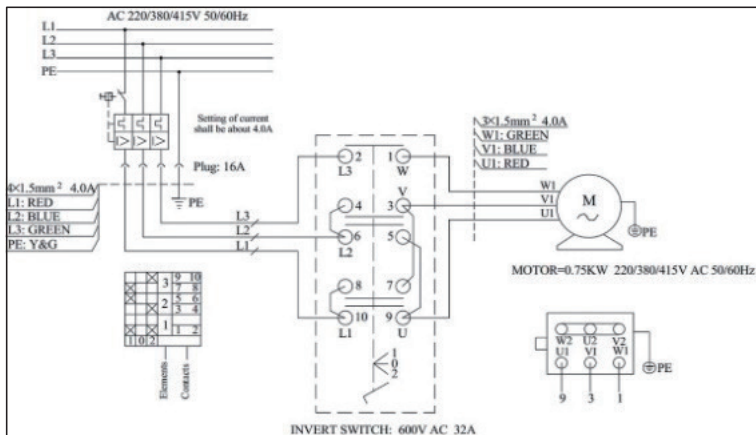
Chapter V Scrapping

When the device expires and cannot be used any more, handle it properly according to local laws and regulations.

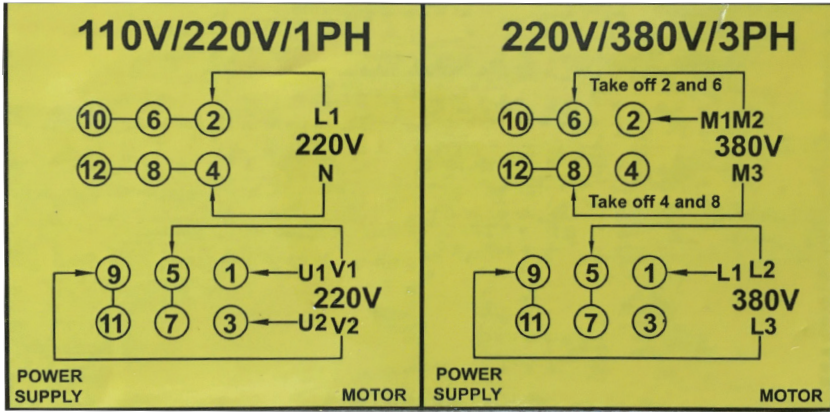
Chapter VI Electric circuit and air circuit diagram



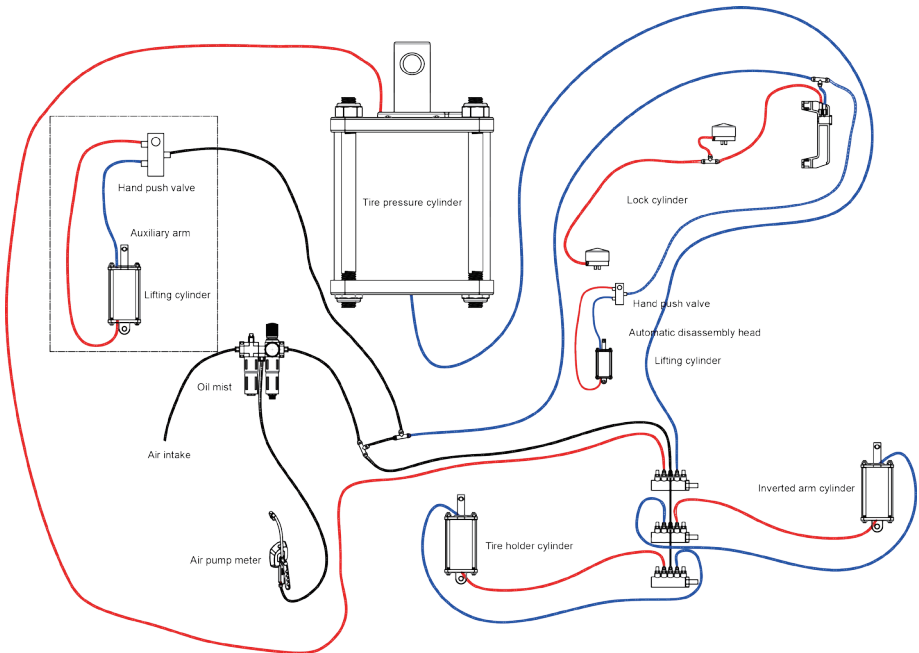
220V



380V

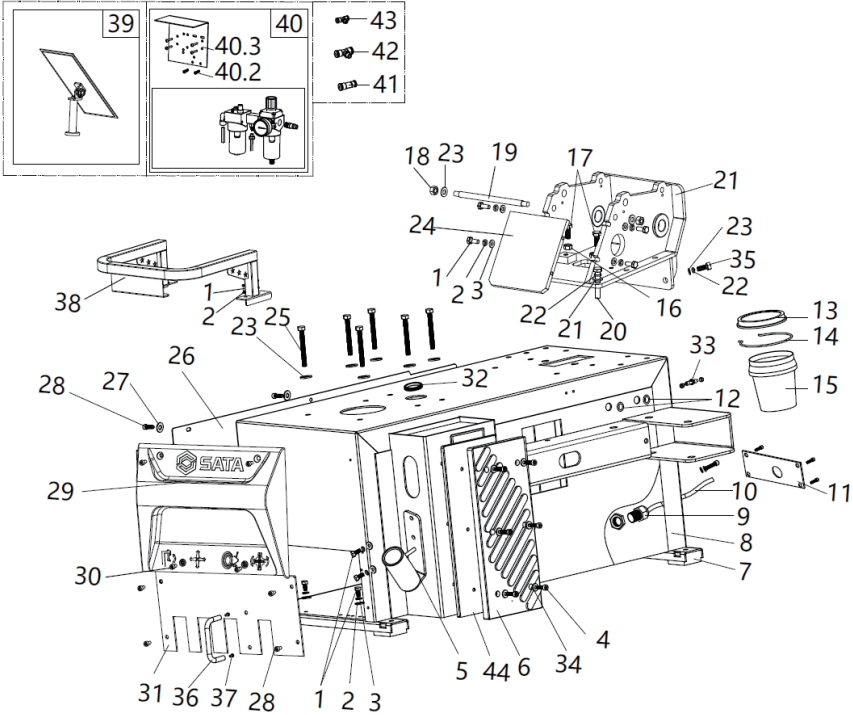


Key wiring diagram 220V/380V(99*474)



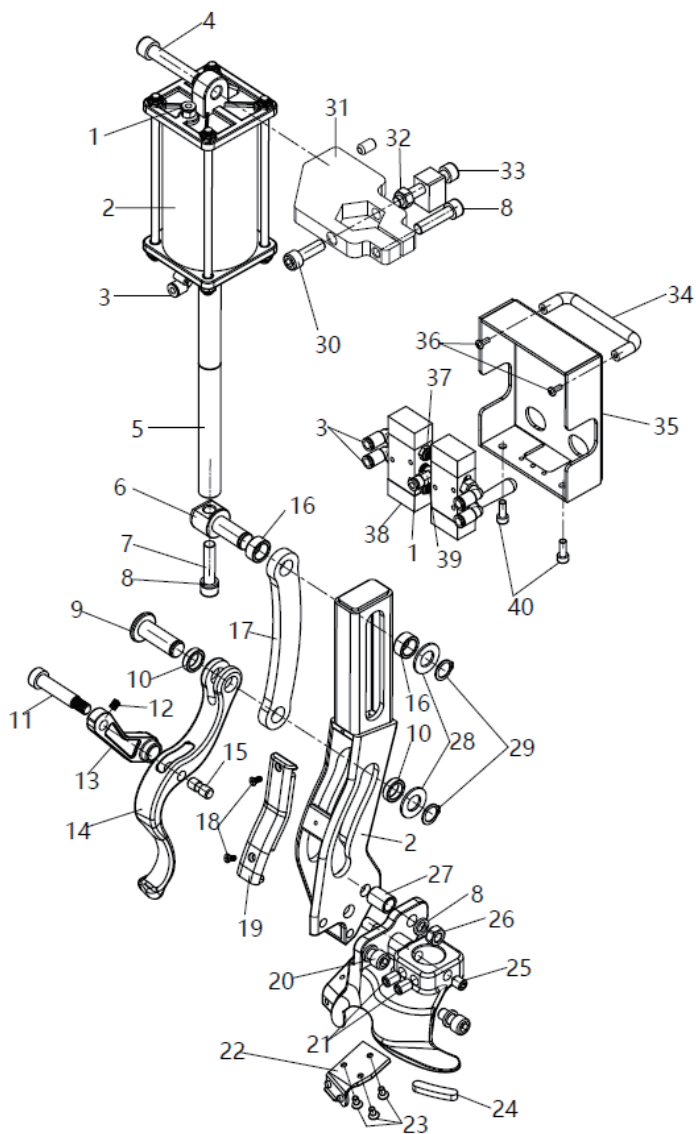
Chapter VII Product explosive view

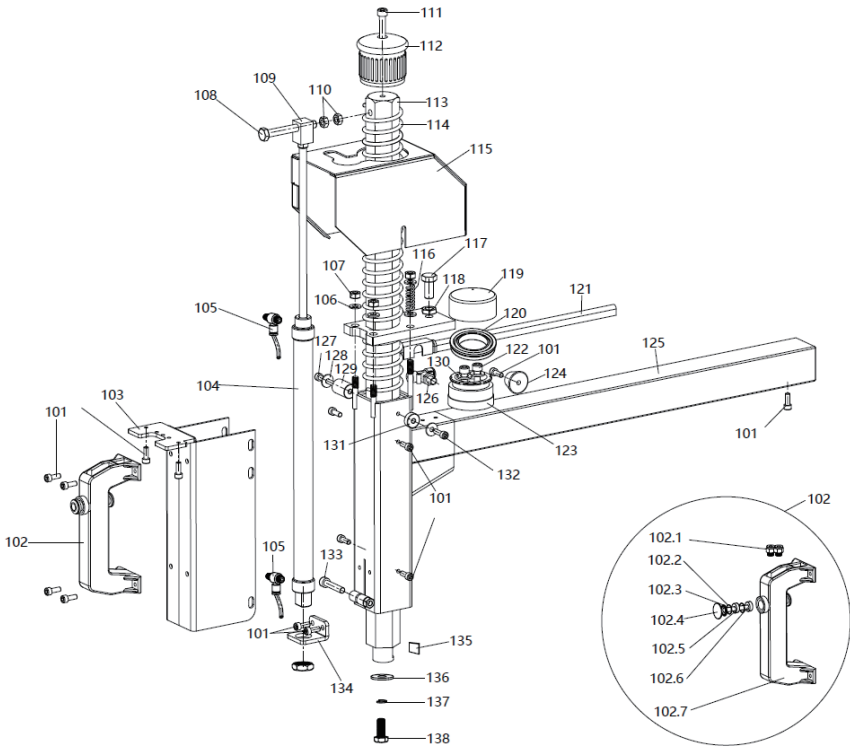
1 Cabinet body assembly:



Drawing No.	SATA No.	Specification/name	Quantity
1	PAE1021-108	Hexagon bolt M8*20	10
2	PAE1021-110	Flat washer \varnothing 8	5
3	PAE1021-113	Elastic washers \varnothing 8	9
4	PAE1021-308	Allen cylindrical head bolt M8*20	7
5	PAE1027-01	Locking rod bracket	1
6	PAE1021-7	Rubber plates for pressed tires	1
7	PAE1021-10	Rubber feet	4
8	PAE1027-02	Chassis	1
9	PAE1021-12	Cable screw G13.5	1
10	PAE1027-03	Power cord	1
11	PAE1027-04	Chassis cover	1
12	PAE1021-14	Coil guard \varnothing 16	2

Drawing No.	SATA No.	Specification/name	Quantity
13	PAE1021-18	Round oil cartridge cap	1
14	PAE1021-17	Oil cartridge rack	1
15	PAE1021-16	Round oil drum	1
16	PAE1021-620	Nut M10	2
17	PAE1022-H49	Hexagon bolt M10*40	2
18	PAE1022-208	Self-locking nut M10	2
19	PAE1023H-29	Adjust the screw	1
20	PAE1021-135	Hexagon bolt M10*60	4
21	PAE1025-02	Inverted arm support	1
22	PAE2021-208	Elastic washers Ø 10	6
23	PAE2021-209	Flat washer Ø 10	12
24	PAE1025-03	Front cover plate of the inverted arm support	1
25	PAE1021-20	Hexagon bolt M10*160	6
26	PAE1027-05	Left panel	1
27	PAE2021-311	Flat washer Ø 6	6
28	PAE1021-24	Allen cylindrical head bolt M6*10	12
29	PAE2021-115	Plastic front cover	1
30	PAE2021-405	Allen cylindrical head bolt M6*16	4
31	PAE1022-25	Front cover (inverted arm)	1
32	PAE1021-19	Coil guard Ø 45	1
33	PAE1021-15	Quick screw separator through 2*8*5	1
34	PAE1021-114	Flat washer Ø8	9
35	PAE1021-127	Hexagon bolt M10*25	2
36	PAE1021-35	Round steel U-handle Ø 10	1
37	PAE2021-118	Cross-grooved semi-round head with pad screw M4*10	2
38	PAE1027-07	guardrail	1
39	PAE1027-08	Mirror set (with stand)	1
40	PAE1021-33	Lubricator assembly (with stand)	1
40.1	PAE1021-33A	Lubricator assembly (without stand)	1
40.2	PAE2021-405	Allen cylindrical head bolt M6*16	2
40.3	PAE1025-28	Lubricator bracket	1
41	PAE1022-425	Push-in pass-through Ø 6- Ø 8	3
42	PAE1027-09	Push-in tee 3" Ø 8	1
43	PAE1027-10	Push-in tee 3" Ø 6	1
44	PAE1027-06	Adjustable tire plate	1

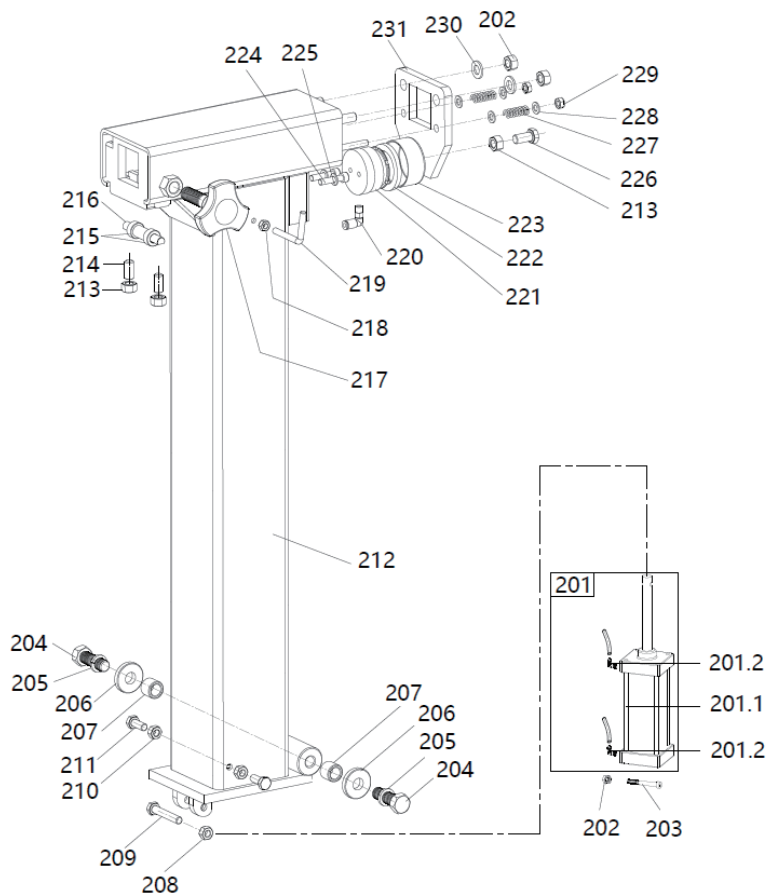
2 Slide arm assembly:




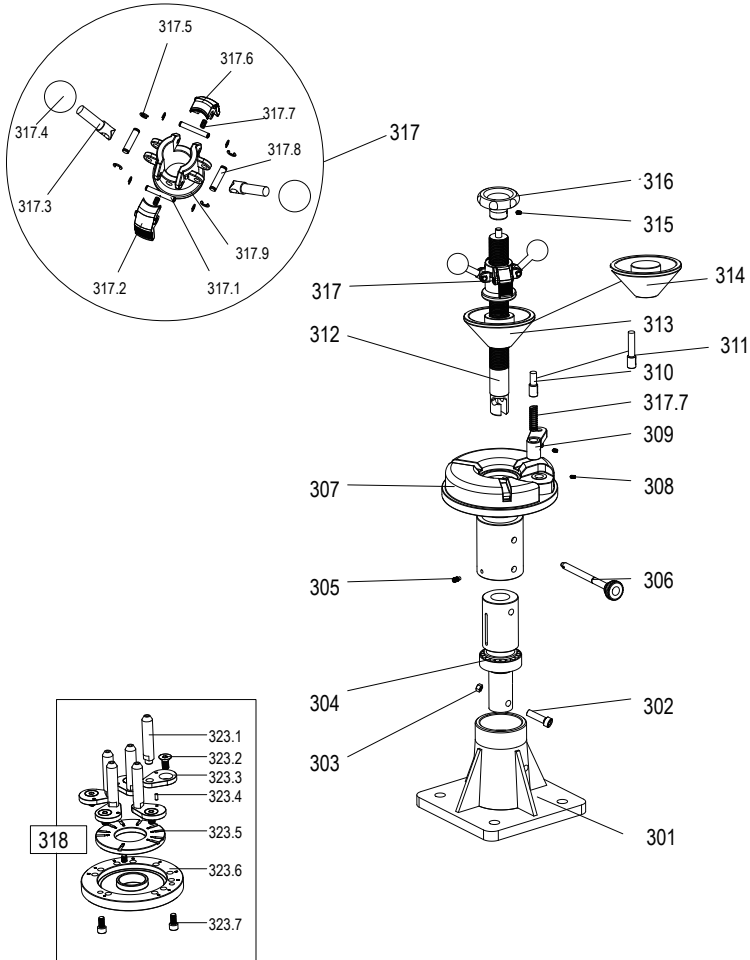
Drawing No.	SATA No.	Specification/name	Quantity
1	PAE1022-113	Push-in pass-through 1/8- ϕ 6	2
2	PAE1026-05	Automatic disassembly head cylinder 80*100	1
3	PAE1026-06	Push-in elbow 1/8- ϕ 6	3
4	PAE1026-07	Allen cylindrical head bolt M12*60	1
5	PAE1026-08	Extension rod	1
6	PAE1026-09	The hook connects axis 2	1
7	PAE1026-10	Allen cylindrical head bolt M10*45	1
8	PAE2021-208	Elastic washer ϕ 10	4
9	PAE1026-11	Hooks connect shafts	1
10	PAE1026-12	Hook roller	2
11	PAE1026-13	Plug screw M12*45	1
12	PAE1026-14	Allen concave end screw M6*8	1
13	PAE1026-15	Automatic removal head swing bar	1
14	PAE1026-16	Automatic tire removal hook	1

图号	配件料号	名称	数量
15	PAE1026-17	Automatic disassembly head cylindrical pin	1
16	PAE1026-18	Hook roller 2	2
17	PAE1026-19	Automatic disassembly head cylinder connecting rod	1
18	PAE1026-20	Phillips countersunk screw M4*10	2
19	PAE1026-21	Automatic removal of the head bracket sheath	1
20	PAE1026-22	Allen cylindrical head bolt M10*20	2
21	PAE1021-125	Allen concave end screw M12*16	3
22	PAE1026-23	Automatic disassembly head filling pad	1
23	PAE1026-24	Cross-groove countersunk screw M5*12	3
24	PAE1021-121	Disassembly head filling pad - rear	1
25	PAE1026-25	Allen concave end screw M12*10	1
26	PAE1022-208	Self-locking nut M10	1
27	PAE1026-26	Copper sleeve 12*14*25mm	1
28	PAE1026-27	Flat washer $\phi 16 \times 30 \times 2$	2
29	PAE1026-28	Circlip (for shaft) $\phi 16$	2
30	PAE1026-29	Allen cylindrical head bolt M10*30	1
31	PAE1026-30	Automatic disassembly head cylinder fixing plate	1
32	PAE1026-31	Nut M10	1
33	PAE1026-32	Hexagon bolt M10*80	1
34	PAE1021-35	Stainless steel U-shaped handle 10*L96	1
35	PAE1026-33	Dual control valve guard	1
36	PAE2021-118	Cross-grooved semi-round head with pad screw M4*10	2
37	PAE1026-34	Muffler 1/8	2
38	PAE1022-H3	Hand push valve	2
39	PAE1026-35	Tee connector 3*1/8	1
40	PAE1026-36	Allen cylindrical head bolt M6*12	2
101	PAE1021-24	Allen cylindrical head screw M6 \times 16	13
102	PAE1022-114	Control handle assembly	1
102.1	PAE1022-113	Quick plug 1/8- $\phi 6$	2
102.2	PAE1022-115	Control handle O-ring 7.5*2.65	4
102.3	PAE1022-116	Control handle valve closure	1
102.4	PAE1022-117	Control handle stem cap	2
102.5	PAE1022-118	Control handle compartment sleeve	3
102.6	PAE1022-119	Stem	1
102.7	PAE1022-120	Control handle	1
103	PAE1026-01	Bracket plate assembly	1
104	PAE1023H-129	Cylinder 25*300	1
105	PAE1022-419	Push-in control valve 1/8- $\phi 6$ with rotation	2

图号	配件料号	名称	数量
106	PAE1021-114	Flat washer $\phi 8 \times 17 \times 1.5$	6
107	PAE1021-716	Self-locking nut M8	5
108	PAE1023H-107	Allen bolt M10 \times 65 (full tooth)	1
109	PAE1023H-108	Small cylinder connection block	1
110	PAE1021-620	Hex nut M10	2
111	PAE1021-118	Allen cylindrical head screw M8 \times 40	1
112	PAE1021-102	Hex pressure bar cap S40	1
113	PAE1026-02	Hex pressure rod	1
114	PAE1021-104	Pressure rod spring $\phi 3.5 \times 55 \times 600$	1
115	PAE1026-03	Lock cylinder guard	1
116	PAE1022-107	Lock spring	2
117	PAE1021-323	Allen bolt M12 \times 35 grade 8.8 black	1
118	PAE1021-107	Nut M12	1
119	PAE1022-130	Locks the cylinder block	1
120	PAE1022-133	Locking cylinder-V-ring seal 60 \times 50 \times 6.5	1
121	PAE1022-136	Tracheal guide groove	1
122	PAE1022-131	Allen cylindrical head bolt M6 \times 40	2
123	PAE1022-134	Locking cylinder-piston	1
124	PAE1022-137	Eco-friendly foot conical 32 \times 25 \times 20	1
125	PAE1026-04	Sliding arm	1
126	PAE1022-110	Quick screw tee 1/8-2" $\phi 6 \times 4$ intermediate thread	1
127	PAE1022-131	Allen cylindrical head bolt M6 \times 40	1
128	PAE1021-114	Flat washer $\phi 8 \times 17 \times 1.5$	2
129	PAE1023H-120	Protective cover washer	1
130	PAE1022-132	Locking cylinder gasket	2
131	PAE1023H-123	Shield washer 8	1
132	PAE1022-121	Allen cylindrical head bolt M6 \times 20	1
133	PAE1021-118	Allen cylindrical head screw M8 \times 40	1
134	PAE1023H-128	Hexagonal pressure rod cylinder seat	1
135	PAE1021-116	Hexagonal rod bird's head manganese steel pad	1
136	PAE1021-126	Disassembly head flat washer $\phi 10.5 \times 33 \times 8$	1
137	PAE2021-208	Spring washer $\phi 10$	1
138	PAE1021-127	Hex head bolt M10 \times 25	1

3 Column Assembly:


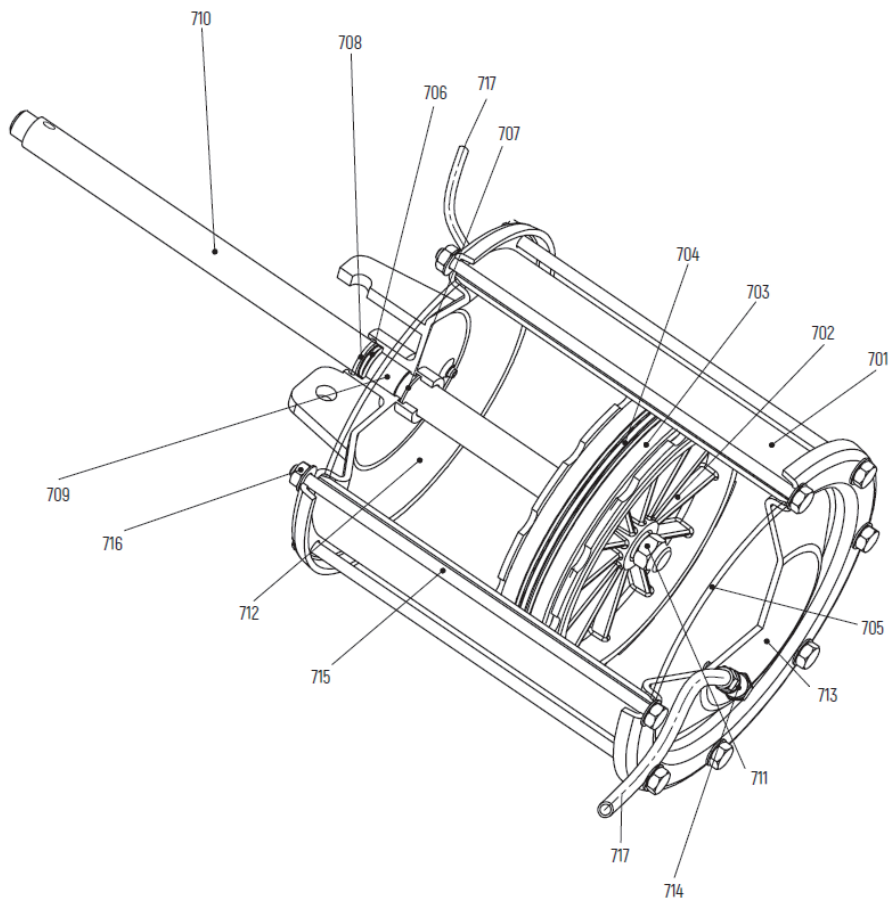
Drawing No.	SATA No.	Specification/name	Quantity
201	PAE1022-201	Inverted arm cylinder assembly (with fitting)	1
201.1	PAE1025-11	Cylinder 80*100	1
201.2	PAE1021-324B	Quick screw elbow 1/8-Φ8*5 (metal) belt rotation	2
202	PAE1022-202	Self-locking nut M12	3
203	PAE1022-203	Allen cylindrical head bolt M12*140	1
204	PAE1025-12	Hexagon bolt M16*55	2
205	PAE1021-303	Elastic washer Ø16	2
206	PAE1021-131	Large washer on the table	2
207	PAE1025-13	Bushing bearings, inner ring diameter 16, outer diameter 24, length 20	2
208	PAE1022-208	Self-locking nut M10	1
209	PAE1021-135	Hexagon bolt M10*60	1
210	PAE1021-625	Nut M10 (thin)	2
211	PAE1021-127	Hexagon bolt M10*25	2
212	PAE1025-14	Quadripartite Column (GC)	1
213	PAE1021-107	Nut M12 (thin)	2
214	PAE1025-15	Allen flat end set screw M12*20	2
215	PAE1025-16	Bushing bearings, inner ring inner diameter 12, outer diameter 22, length 10	2
216	PAE1025-17	Slide arm roller pin	1
217	PAE1025-18	Inverted arm locking handle (red triangle)(M18*60mm)	1
218	PAE2021-126	Nut M8 (white)	2
219	PAE1021-133	Column hooks	1
220	PAE1022-221	Push-in elbow 1/8-Φ6 (metal)	1
221	PAE1022-134	Locking cylinder-piston (rubber)	1
222	PAE1022-133	Locking cylinder-V-ring seal 60*50*6.5	1
223	PAE1022-130	(nitriding) Lock cylinder block C233011602A	1
224	PAE1022-131	Allen cylindrical head bolt M6*40	2
225	PAE1022-132	(Gasket 6) Locking cylinder gasket (nylon)	2
226	PAE1021-323	Allen bolt M12*35 grade 8.8 black	1
227	PAE1022-107	Lock spring	2
228	PAE1021-114	Flat washer Φ8*17*1.5	4
229	PAE1021-716	Self-locking nut M8	2
230	PAE1021-316	Flat washer Φ12*24*2	2
231	PAE1025-19	Sliding arm locking plate	1

4 Workbench assembly:


Drawing No.	SATA No.	Specification/name	Quantity
302	PAE1027-14	Hexagon bolt M16*85	1
303	PAE1021-132	Self-locking nut M16	1
304	PAE1027-15	Bearing 61914	1
305	PAE1027-19	Allen convex top wire M8*16	1
306	PAE1027-20	Lifting the operating table pin shaft	1
307	PAE1027-22	Console disc	1
307	PAE1027-20	Lifting the operating table pin shaft	1

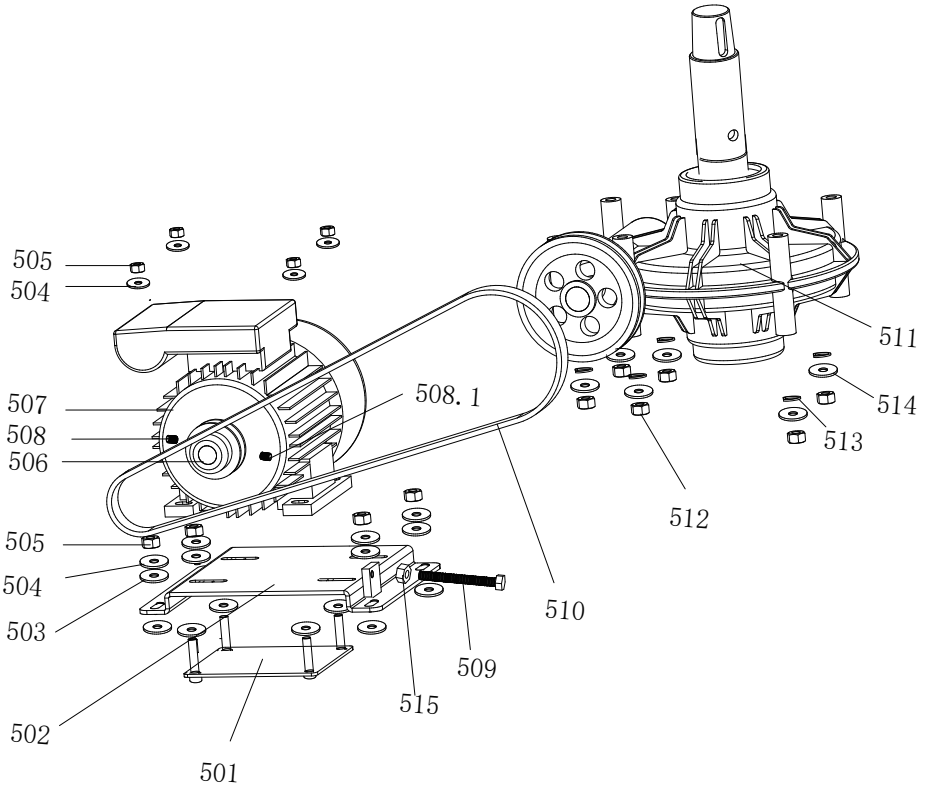
Drawing No.	SATA No.	Specification/name	Quantity
308	PAE1027-23	Top wire M5*10	2
309	PAE1027-25	Operator station tire alignment block	1
310	PAE1027-26	Console tire dowel pin 1	1
311	PAE1027-27	Console tire alignment pin 2	1
312	PAE1027-28	Tire locking lever	1
313	PAE1027-29	Cone (nylon)	1
314	PAE1027-30	Cone (iron)	1
315	PAE1027-31	Top wire M6*10	1
316	PAE1022-H10	Plastic handle	1
317	PAE1027-104	Closing nut	1
317.1	PAE1027-32	Closing nut tab pin shaft	2
317.2	PAE1027-33	Opening and closing nut sheet 1	1
317.3	PAE1027-34	Quick opening and closing nut handle	2
317.4	PAE1027-35	Black ball handle M12*40	1
317.5	PAE1027-36	E-type circlip (for shaft)	4
317.6	PAE1027-37	Closing nut sheet 2	1
317.7	PAE1027-38	Quick nut spring press	2
317.8	PAE1027-39	Handle pins	2
317.9	PAE1027-17	Quick opening and closing nut body	1
318	PAE1027-105	Universal jaw assembly assembly	1
318.1	PAE1027-40	The jaw supports the shaft	5
318.2	PAE1027-41	Allen countersunk screw M12X25	5
318.3	PAE1027-42	Single claw body	5
318.4	PAE1027-43	Cylindrical pin $\phi 5 \times 12$	5
318.5	PAE1027-44	turntable	1
318.6	PAE1027-45	Universal claw flange	1
318.7	PAE1026-22	Allen cylindrical head screw	3

5 Large cylinder assembly:

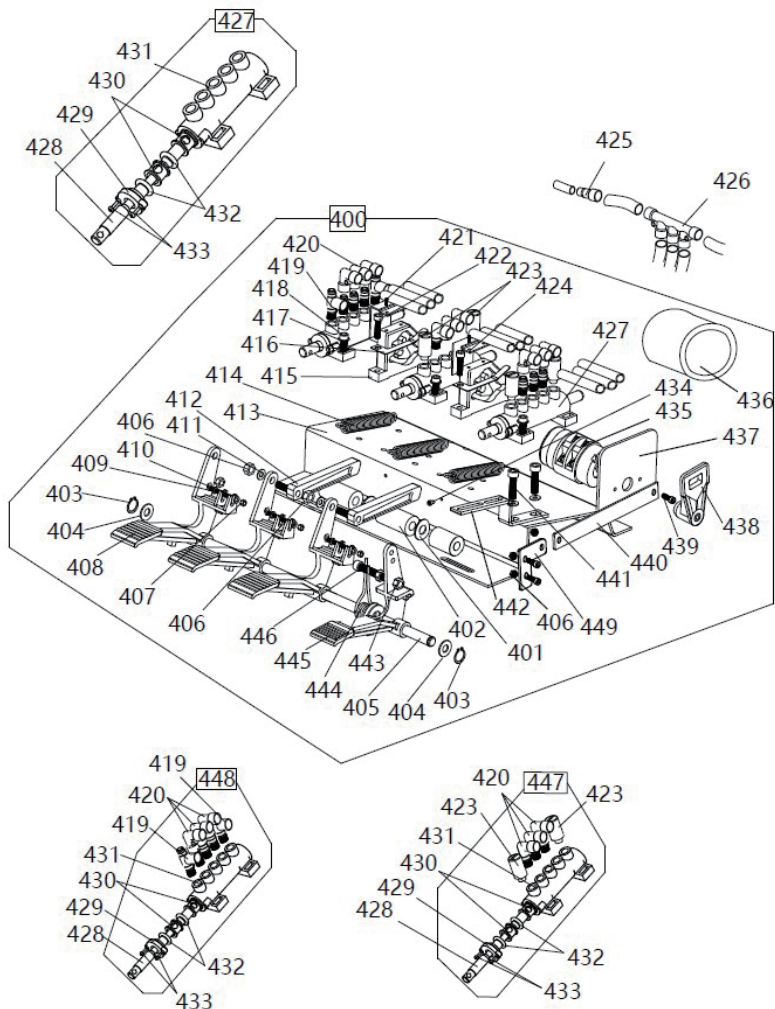


Drawing No.	SATA No.	Specification/name	Quantity
700	PAE1024-31	Atmospheric cylinder (assembly)	1
701	PAE1024-32	Atmospheric cylinder barrel 200	1
702	PAE1024-33	Piston 200	1
703	PAE1024-34	V-ring	2
704	PAE1024-35	Piston guide rings	1
705	PAE1024-36	O-ring $\phi 197 \times 2.65$	2
706	PAE1021-706	Skeleton wiper seal	1
707	PAE1021-707	Sealing ring $\phi 19 \times 2.65$	1
708	PAE1021-708	$\phi 30$ holes with circlips	1
709	PAE1021-709	Copper sleeve 20*23*20	1
710	PAE1021-710	Piston rod	1
711	PAE1021-711	Allen nut M18*1.5*9mm	1
712	PAE1024-37	Upper cylinder head	1
713	PAE1024-38	Lower cylinder head	1
714	PAE1021-423	Quick-insert elbow 1/8- $\phi 8 \times 5$	2
715	PAE1021-715	Hexagon bolt M8*230mm	8
716	PAE1021-716	Self-locking nut M8	8
717	PAE1024-42	Trachea $\phi 8 \times 900$ mm	2

6 Motor Part:

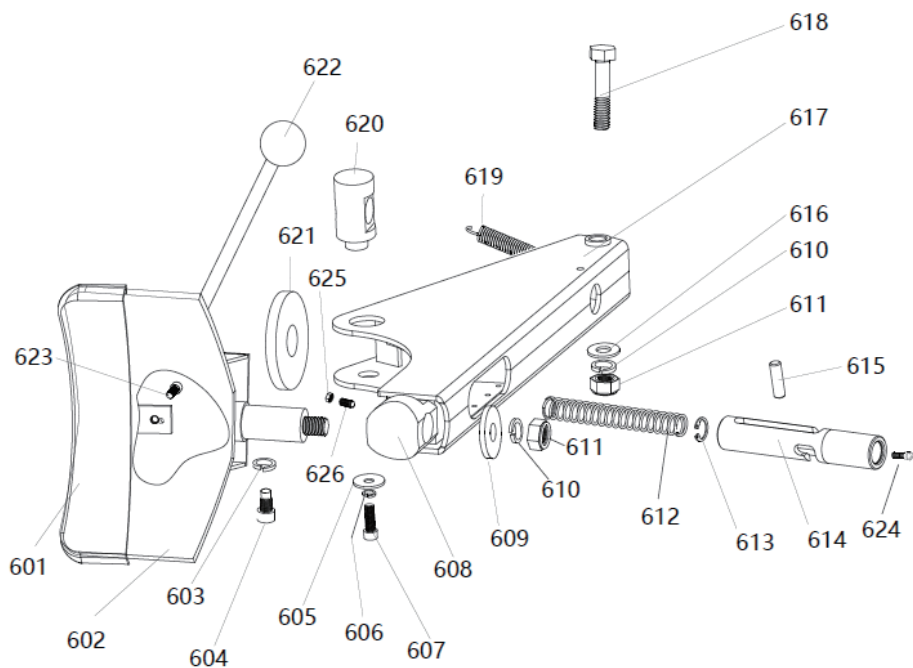


Drawing No.	SATA No.	Specification/name	Quantity
501	PAE1021-501	Motor bracket plate group welding	1
502	PAE1021-523	Motor mounting plate group welding	1
503	PAE1021-503	Motor rubber pad 1	12
504	PAE1021-114	Flat washer \varnothing 8	8
505	PAE2021-126	Nut M8	9
506	PAE1021-506	Pulleys	1
507	PAE1024-23	Motor 60HZ/110V/1.1Kw	1
	PAE1024-24	Motor 50HZ/220V/1.1Kw	
	PAE1027-48	Two-speed motor 50HZ/380V/0.8/1.1Kw	
508	PAE1021-508	Allen convex top wire M8*16	1
508.1	PAE1021-508A	Allen concave end screw M8*12	1
509	PAE1021-509	Hexagon bolt M8*70	1
510	PAE1027-49	Multi-wedge Belt AV13*1100 (SD)	1
511	PAE1027-50	Gearbox	1
512	PAE1021-620	Nut M10	6
513	PAE2021-208	Elastic washers \varnothing 10	6
514	PAE2021-209	Flat washer \varnothing 10	6
515	PAE2021-126	Nut M8	1

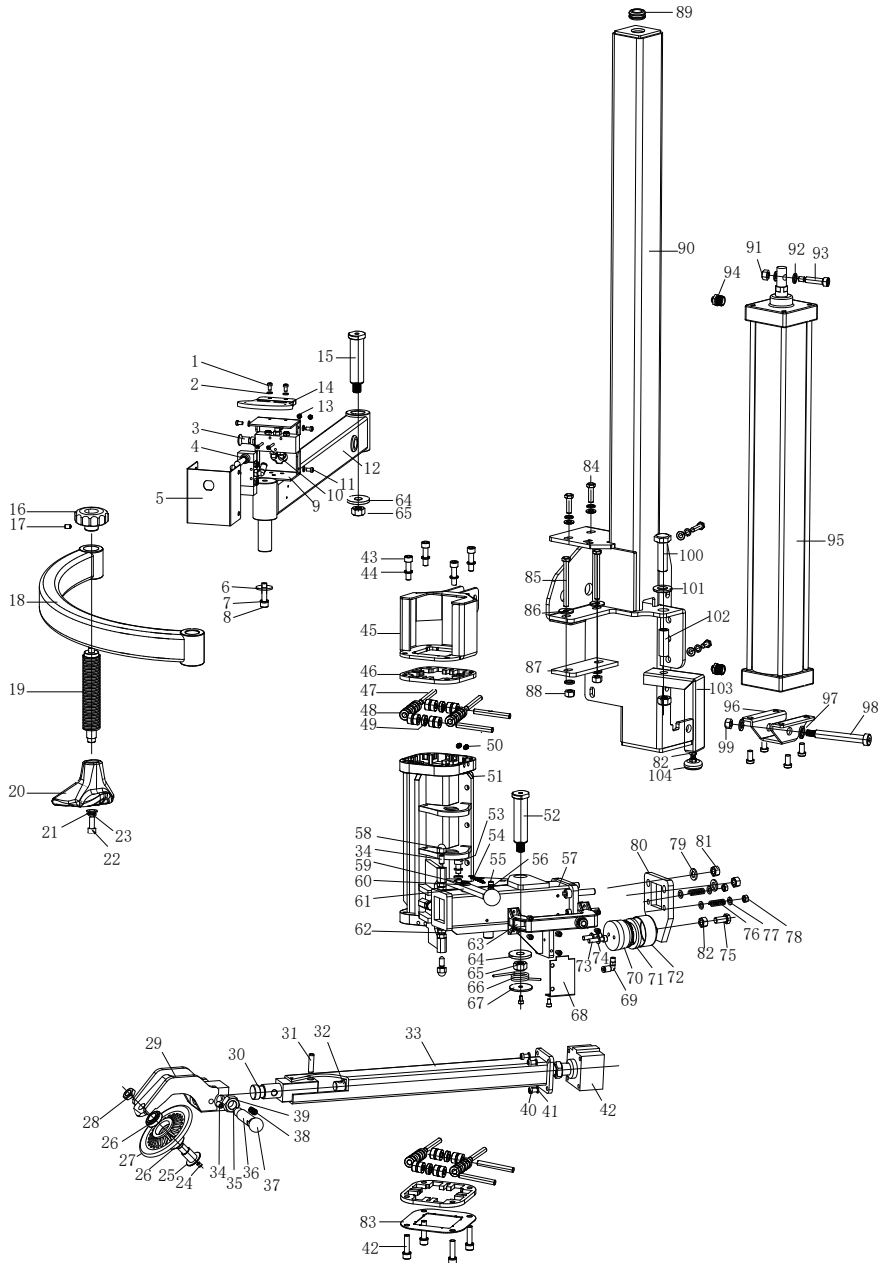
7 Pedal assembly:


Drawing No.	SATA No.	Specification/name	Quantity
400	PAE1027H-109	Four-foot assembly assembly	1
401	PAE1021-403	Flat washer $\phi 12 \times 24 \times 1.5$	2
402	PAE1021-437	Bushing 2	1
403	PAE1021-322	Circlip (shaft) $\phi 12$	2
404	PAE1021-316	Flat washer $\phi 12$	9
405	PAE1021-404	Axis $\phi 12 \times 282$	1
406	PAE1021-716	Self-locking nut M8	2

Drawing No.	SATA No.	Specification/name	Quantity
407	PAE1021-438	Self-locking nut M4	3
408	PAE1021-407	Big foot	3
409	PAE1021-439	Phillips grub screw M4*35	3
410	PAE1021-440	Flat washer $\phi 4$	3
411	PAE1021-114	Flat washer $\phi 8$	2
412	PAE1021-413	Cam linkage	2
413	PAE1022-413	Foot bracket group welding	1
414	PAE1021-435	Foot pedal pull spring	3
415	PAE1021-420	Cam body	2
416	PAE1021-421	Cam spring plates	2
417	PAE2021-311	Flat washer $\phi 6$	14
418	PAE1021-416	Allen round head bolt M6*25	11
419	PAE1022-419	Push-in control valve 1/8- $\phi 6$	2
420	PAE1021-423	Push-in elbow 1/8	9
421	PAE1021-418	Cross-groove semi-round head self-tapping screw 3*10	4
422	PAE1021-416	Allen round head bolt M6*25	4
423	PAE1021-422	Muffler 1/8	4
424	PAE1021-419	Cam cover	2
425	PAE1022-425	Quick plug straight through $\phi 6$ rpm $\phi 8$	1
426	PAE1022-426	Quick-plug 5* $\phi 8$	1
427	PAE1022-427	Five-way valve body assembly	3
428	PAE1022-428	5-way stem 12mm	3
429	PAE1021-429	5-way bonnet	3
430	PAE1021-430	5-way valve spacer sleeve	15
431	PAE1021-431	5-way valve body	3
432	PAE1021-432	O-ring 12*20*4	18
433	PAE1021-418	Cross-groove semi-round head self-tapping screw 3*10	6
434	PAE1022-434	Allen round head bolt M5*10	1
435	PAE1021-425	Transfer switch	1
436	PAE1021-443	Switch sleeve	1
437	PAE1022-8	Switch bracket 1	1
438	PAE1024-09	Inverted switch handle	1
439	PAE1021-108	Allen bolt M8*20	4
440	PAE1022-3	Switch bracket 2	1
441	PAE1021-24	Allen cylindrical head bolt M6X16	2
442	PAE1022-18	Torsion spring limit bracket	1
443	PAE2021-126	Nut M8	2
444	PAE1021-409	Foot pedal torsion spring $\phi 3.5$ *20.4*70	1
445	PAE1021-410	Big foot	1
446	PAE1024-20	Hexagon bolt M8*30	1
447	PAE1024-10	5-way valve assembly (full elbow)	2
448	PAE1021-448	5-way valve assembly (with regulating valve)	1
449	PAE1021-437	Two-speed switch bracket 2	1

8 Shovel arm assembly:


Drawing No.	SATA No.	Specification/name	Quantity
601	PAE1023H-41	Tire shovel sheath	1
602	PAE1021-602	Tire shovel	1
603	PAE1021-603	Elastic washer $\phi 14$	2
604	PAE1021-604	Positioning nails	2
605	PAE1021-605	Flat washer $\phi 8 \times 30 \times 2$	1
606	PAE1021-113	Elastic washer $\phi 8$	1
607	PAE1021-108	Hexagon bolt M8*20	1
608	PAE1021-608	Tire blade hinge	1
609	PAE1021-131	Large washer on the table	1
610	PAE1021-303	Elastic washer $\phi 16$	2
611	PAE1021-132	Self-locking nut M16	2
612	PAE1021-612	Adjust the sleeve spring $\phi 1.5 \times 19.5 \times 125$	1
613	PAE1021-613	Holes with circlips $\phi 20$	1
614	PAE1021-614	Cylinder piston rod adjustment sleeve	1
615	PAE1021-615	Atmospheric cylinder piston rod pin shaft 10*33	1
616	PAE1021-616	Flat washer $\phi 16 \times 30 \times 2$	1
617	PAE1021-617	Shovel arm	1
618	PAE1021-618	Hexagon bolt M16*100	1
619	PAE1024-30	Shovel arm pull spring $\phi 2.5 \times 20 \times 70$	1
620	PAE1024-41	Cylinder tie rod sleeve	1
621	PAE1021-621	Shovel arm pad (thin)	1
622	PAE1021-622	Black ball handle M16*50	1
623	PAE1021-24	Allen cylindrical head bolt M6*10	1
624	PAE2021-405	Allen cylindrical head bolt M6*16	1
625	PAE1021-625	Nut M10 (thin)	1
626	PAE1021-626	Allen concave end set screw M10*20	1

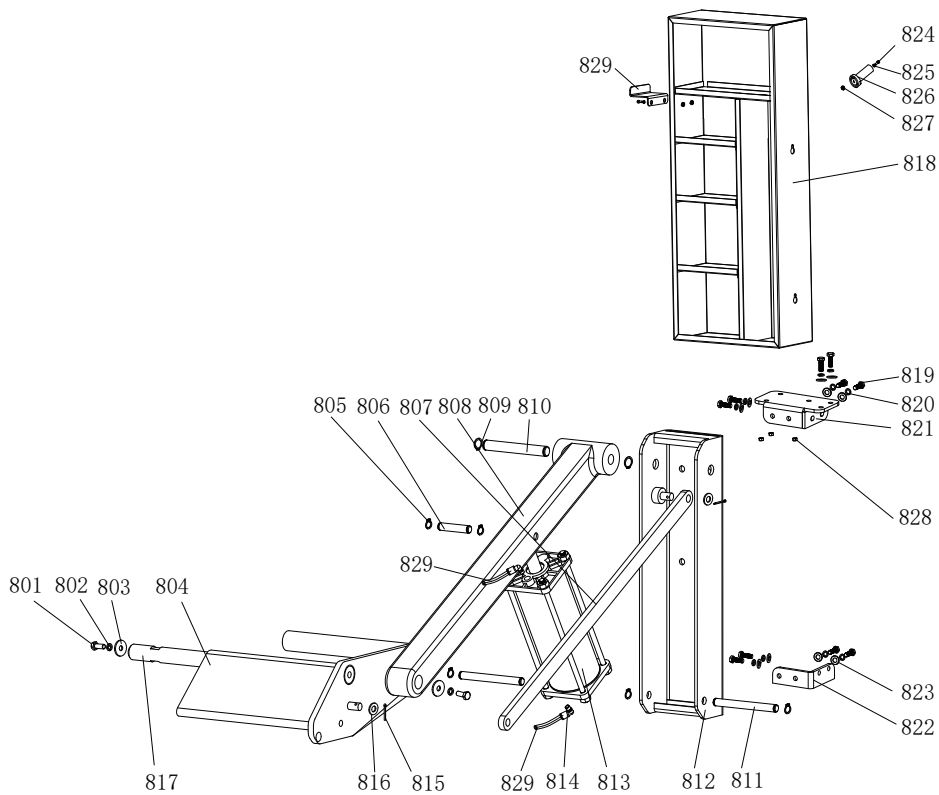
9 Right auxiliary arm:


Drawing No.	SATA No.	Specification/name	Quantity
	PAE1027-108	Auxiliary arm assembly	1
1	PAE2021-405	Allen cylindrical head bolt M6*16	7
2	PAE2021-311	Flat washer $\phi 6$	6
3	PAE1027-79	Two-position, five-way hand pull valve	1
4	PAE1021-H27	Hand push valve assembly	1
5	PAE1027-18	BD16 hand push valve front cover	1
6	PAE1022-206	Lock the gasket	1
7	PAE2021-208	Elastic washer $\phi 10$	8
8	PAE1021-127	Hexagon bolt M10*25	1
9	PAE1027-21	BD16 Hand Push Valve Back Cover	1
10	PAE1021-439	Phillips grub screw M4*35	2
11	PAE1021-24	Allen cylindrical head bolt M6*10	17
12	PAE1027-81	Right cross arm	1
13	PAE1021-438	Self-locking nut M4	2
14	PAE1022-H2	handle	1
15	PAE1022-H32	Transbone pin one	1
16	PAE1022-H10	Plum blossom handle 12*80 (hole)	1
17	PAE1022-H11	Allen concave end screw 6*6	1
18	PAE1022-H12	Bend arms	1
19	PAE1027-82	Adjust the lead screw	1
20	PAE1021-H49	Tire press	1
21	PAE1021-110	Flat washer $\phi 8$	2
22	PAE1021-308	Allen cylindrical head bolt M8*20	1
23	PAE1021-113	Elastic washers $\phi 8$	6
24	PAE1027-109	Allen concave end screw M10*12	1
25	PAE1027-110	Tire roller shaft	1
26	PAE1027-83	Thrust bearing 32904	2
27	PAE1027-111	Tire rollers	1
28	PAE1027-112	Stainless steel nut M16*1.5	1
29	PAE1027-85	Turn the head	1
30	PAE1027-89	Inner slider	1
31	PAE1027-113	$\phi 10$ pins	1
32	PAE1027-92	pull rod	1
33	PAE1027-91	Slide square tube	1

Drawing No.	SATA No.	Specification/name	Quantity
34	PAE1024-18	Allen concave end nail screw 10*35	4
35	PAE1027-87	Snap pins	1
36	PAE1027-88	Put gloves	1
37	PAE1021-H10	Black ball handle M6*25	1
38	PAE1027-121	Spring \varnothing 0.9*12*35	1
39	PAE1024H-06	Flat nut M20*1.5	1
40	PAE1027-94	Allen cylindrical head bolt M8*25	4
41	PAE1021-113	Elastic washers ϕ 8	8
42	PAE1027-93	SDA63X20-B external teeth cylinder	1
43	PAE1022-27	Hexagon bolt M10*30	8
44	PAE2021-208	Elastic washer ϕ 10	16
45	PAE1027-95	The cylinder is connected to the ear bracket	1
46	PAE1022-H27	Roller cleats	2
47	PAE1022-216	Bearing steel cylindrical pin M10*80	8
48	PAE1022-H29	Needle roller bearings with inner ring NA6900	16
49	PAE1022-218	Deep groove ball bearings 6900Z	8
50	PAE1021-508A	Allen concave end screw 8*12	8
51	PAE1027-96	BD16 lifting slide sleeve	1
52	PAE1027-114	BD16 cross arm pin two	1
53	PAE1026-29	Allen cylindrical head bolt M10*30	5
54	PAE1027-100	Pull spring ϕ 1.2*10*50	1
55	PAE1021-416	Allen round head bolt M6*25	1
56	PAE2021-121	Nut M6	7
57	PAE1027-101	Square sleeve group welding	1
58	PAE1027-115	Stainless steel cover type nut M10	2
59	PAE1021-322	Circlips (for shafts) ϕ 12	1
60	PAE1021-316	Flat washer ϕ 12	1
61	PAE1027-98	Lock handle group welding	1
62	PAE1021-127	Hexagon bolt M10*25	3
63	PAE1022-114	Control handle assembly	1
64	PAE1021-132	Self-locking nut M16	2
65	PAE1021-131	Large washer on the table	2
66	PAE1027-116	Torsion spring Φ 35*4*3.17	1
67	PAE1027-117	BD16 torsion spring gasket	1

Drawing No.	SATA No.	Specification/name	Quantity
68	PAE1027-97	Locking enclosure box	1
69	PAE1022-221	Quick-insert elbow 1/8- ϕ 6	1
70	PAE1022-134	Lock cylinder-piston	1
71	PAE1022-133	Locking cylinder-V-ring seal 60*50*6.5	2
72	PAE1022-130	Lock cylinder block C233011602A	1
73	PAE1022-131	Allen cylindrical head bolt M6*40	2
74	PAE1022-132	Locking cylinder gasket (nylon)	2
75	PAE1021-323	Hexagon bolt M12*35	1
76	PAE1022-107	Lock spring	2
77	PAE1021-114	Flat washer ϕ 8	4
78	PAE1021-716	Self-locking nut M8	2
79	PAE1021-316	Flat washer ϕ 12	2
80	PAE1025-19	Sliding arm locking plate	1
81	PAE1022-202	Self-locking nut M12	2
82	PAE1021-107	Nut M12 (thin)	2
83	PAE1022-H26	Roller cover	1
84	PAE1022-H49	Hexagon bolt M10*40	6
85	PAE1022-H50	Hexagon bolt M10*120	2
86	PAE2021-212	Thickened flat washer ϕ 10	8
87	PAE1022-H52	Column fixing splint	1
88	PAE1024H-02	Nut M10	2
89	PAE1022-H53	Coil guard ϕ 28-5	2
90	PAE1027-102	BD16 column assembly weldments	1
91	PAE1022-208	Self-locking nut M10	1
92	PAE1021-317	Elastic washer ϕ 12	1
93	PAE1022-H56	Plug screw M12*40	1
94	PAE1022-H57	Quick plug straight through 1/2- ϕ 6	2
95	PAE1027-103	Cylinder (without seat) ϕ 100x700	1
96	PAE1022-H61	Cylinder base	1
97	PAE1021-303	Elastic washer ϕ 16	1
98	PAE1022-H63	Plug screw M16*110	1
99	PAE1022-202	Self-locking nut M12	1
100	PAE1027-118	Hexagon bolt M16*120	1
101	PAE1021-616	Flat washer ϕ 16	1
102	PAE1027-119	Shovel arm seat cover	1
103	PAE1027-120	BD16 support rod body set	1
104	PAE1022-H66	Rubber shock-absorbing feet with cup pads	1

10 Tire rack assembly:



Drawing No.	SATA No.	Specification/name	Quantity
801	PAE1021-127	Allen screw M10x25	1
802	PAE2021-208	Elastic washer ϕ 10	2
803	PAE2021-212	Flat washer ϕ 10	2
804	PAE1027-62	Tire rack (spray paint) - outdoor wrinkle black	2
805	PAE1021-322	Circlips (for shafts) ϕ 12	1
806	PAE1027-63	Cylinder latch two	4
807	PAE1027-64	Tire support lever	1
808	PAE1027-65	Tire support arm	1
809	PAE1026-28	Circlip ϕ 16	1
810	PAE1027-66	Swivel arm pin	2
811	PAE1027-67	Cylinder latch one	1
812	PAE1027-68	Tire carrier support	1
813	PAE1027-69	C955 cylinder 75*162-316	1
814	PAE1022-221	Quick-insert elbow 1/8- ϕ 6	1
815	PAE1027-70	ϕ 3 cotter pin	2
816	PAE1021-316	Flat washer ϕ 12	2
817	PAE1027-71	Connect the shafts	2
818	PAE1027-72	Storage compartment assembly	1
819	PAE1022-27	Hexagon bolt M10*30	1
820	PAE2021-208	Elastic washer ϕ 10	13
821	PAE1027-73	Bracket welding on the tire frame	13
822	PAE1027-74	The bracket under the tire frame is welded	1
823	PAE2021-209	Flat washer ϕ 10	1
824	PAE1022-121	Allen cylindrical head bolt M6*20	13
825	PAE2021-311	Flat washer ϕ 6	1
826	PAE1027-75	Tool handle	1
827	PAE1022-H14	Self-locking nut M6	1
828	PAE1022-208	Self-locking nut M10	3
829	PAE1027-121	Tire Assist Hanging Board	3

适用型号 / Model: AE1027H/AE1027H-3

版本号 / Version No: V-AE-1027H-2303

世达汽车科技（上海）有限公司

SATA Automotive Technology (Shanghai) Co., Ltd

客户服务：上海市嘉定区南翔镇静唐路 988 号 5-12 幢

Customer service: Building 5-12, No. 988, Jingtang Road, Nanxiang Town, Jiading District, Shanghai

邮编 / Post: 201802

电话 / Tel.: (86 21) 6061 1919

传真 / Fax: (86 21) 6061 1918