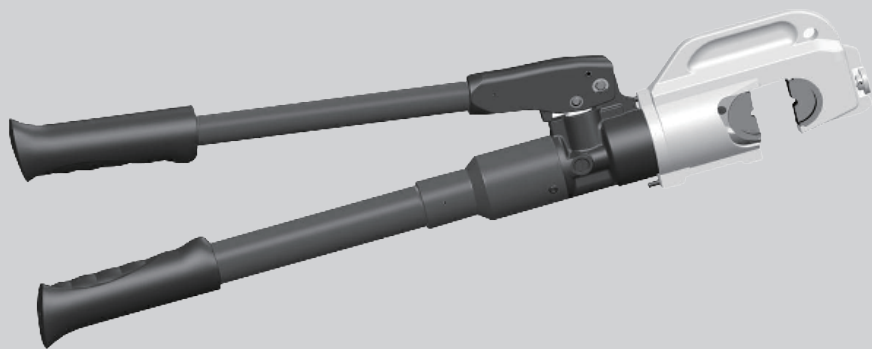




液压电缆压接钳 11T
Hydraulic Crimper 11T

99019



使用说明书 \ User's Manual

中文

EN



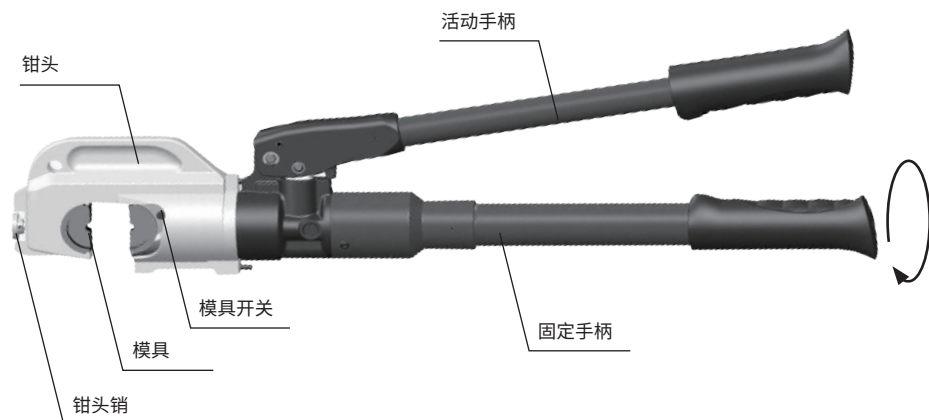
产品描述

- 头部采用锻造合金钢材质，坚固耐用
- C 型超大开口设计，钳头可旋转 180，使用简单
- 采用两段式液压设计，保证用较少的力即可快速完成压接
- 泄压阀设计精巧，手无需离开手柄，旋转活动手柄下压就可泄压
- 内置过载保护的压力安全阀，当压接完成后自动泄压
- 玻璃纤维绝缘手柄可耐电压，确保使用者的安全

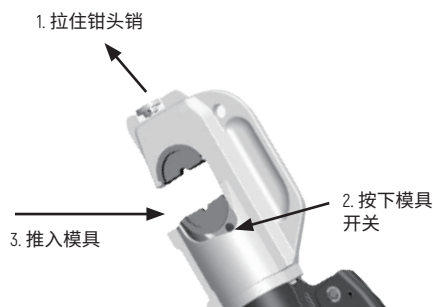
性能参数

型号	99019
液压钳形式	整体式
出力	11 吨
行程 (mm)	38
压接范围 (mm ²)	50~400
本体长度 (mm)	640
模具形式	六角式
配置模具 (mm ²)	50,70,95,120,150,185,240,300,400

使用方法



- 检查被压端子与电缆规格是否匹配。
- 选择与压接端子匹配压接模具。
- 更换压接钳模具，方法：如右图。
- 将连接端子放入工具头，操作活动手柄，压接开始。
- 则会有 [咯噔] 声音，为安全保护装置打开；表示压接操作完成。
- 将固定手柄逆时针方向旋转泄压，活塞自动复位。
- 每次使用后，须将工具清洁干净后放入存储箱。



操作注意事项

- 避免上下模具直接碰接，以免损坏压接头和上下模。
- 一年内不管是否有使用，都必须更换液压油，所更换液压油为 L-HV15 液压油。
- 操作时选择正确的压缩规格，以免造成挤压变形。
- 有疑问时，请务必打电话与厂方或经销商联系。

故障检修

- 若长期未使用，出现油压不稳定，本产品可自动调整油压恢复正常。操作方法：将最小规格模具安装在产品上，低速空压来回 5-6 次，油压自动调整。
- 若没有任何其他故障情况下，工具本身没有了压力，则处理方式为加满液压油。
- 当活塞发生后退之现象时，其原因为：
机体内部有杂物造成压接不紧，处理方式为内部处理干净。也可能阀门密封不良，油内混有空气，应排除空气。
- 活塞不能完全退回原位，是复位弹簧变形或损坏。

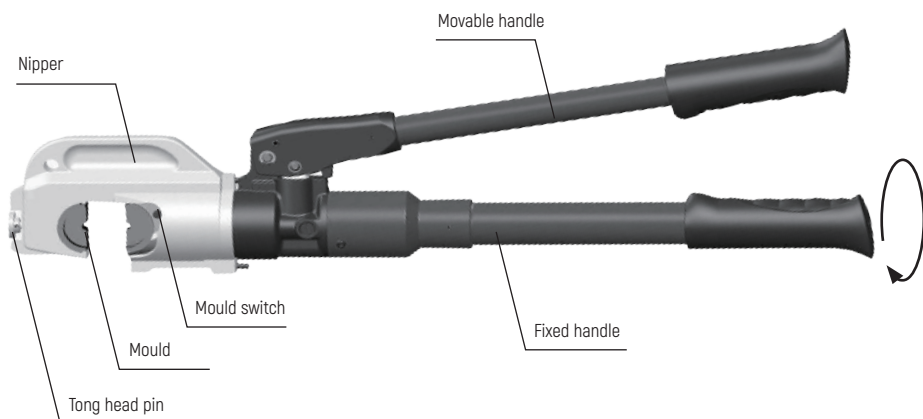
Product description

- The head is made of forged alloy steel, which is strong and durable
- C-type large opening design, the tong head can be rotated 180 degrees, easy to use
- The two-stage hydraulic design ensures that the crimping can be completed quickly with less force
- The pressure relief valve is exquisitely designed. The hand does not need to leave the handle, and the pressure can be released by rotating the movable handle
- Pressure safety valve with built-in overload protection can release pressure automatically after crimping
- Glass fiber insulated handle can withstand voltage to ensure the safety of users

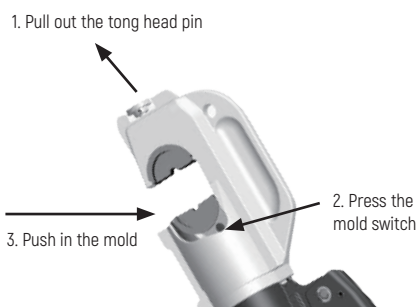
Performance parameters

Model	99019
Hydraulic tong form	integral type
Output	11 tons
Stroke (mm)	38
Crimping range (mm ²)	50~400
Body length (mm)	640
Mold form	Hexagonal
Configuration mold (mm ²)	50,70,95,120,150,185,240,300,400

Usage method



- Check whether the crimped terminal matches the cable specification.
- Select the crimping die matching with the crimping terminal.
- Replace the die of crimping clamp. Method: as shown in the right figure.
- Put the connection terminal into the tool head, operate the movable handle, and start crimping.
- There will be a [click] sound to open the safety protection device, indicating that the crimping operation is completed.
- Rotate the fixed handle anticlockwise to relieve pressure, and the piston will reset automatically.
- After each use, clean the tools and put them into the storage box.



Operation precautions

- Avoid direct contact between the upper and lower dies, so as to avoid damaging the pressure joint and the upper and lower dies.
- No matter whether it is used or not, the hydraulic oil must be replaced within one year. The hydraulic oil to be replaced is I-hv15 hydraulic oil.
- Select the correct compression specification during operation to avoid extrusion deformation.
- If you have any questions, please call the manufacturer or dealer.

Troubleshooting

- If it is not used for a long time and the oil pressure is unstable, the product can automatically adjust the oil pressure to return to normal. Operation method: install the mold with the minimum size on the product, 5-6 times of low-speed air pressure and automatic adjustment of oil pressure.
- If there is no other fault and there is no pressure on the tool itself, the treatment method is to fill up the hydraulic oil.
- When the piston retreats, the reasons are as follows:

The internal part of the machine body is not tight due to impurities, and the treatment method is clean internal treatment. It is also possible that the valve seal is not good, there is air mixed in the oil, so air should be eliminated.
- The piston cannot return to its original position completely, because the return spring is deformed or damaged.

适用型号 / Model:

99019

版本号 / Version No:

V_SC_99019_0702

世达工具（上海）有限公司
SATA TOOL (SHANGHAI) LIMITED

客户服务：上海市浦东新区碧波路 177 号 A 座 302 室

Customer service: Room 302, Area A, No. 177, Bibo Road, Pudong New Area, Shanghai

邮编 / Post: 201203

电话 / Tel.: (86 21) 6061 1919

传真 / Fax: (86 21) 6061 1918